



# **34<sup>th</sup> NUSSU Council Meeting #6**

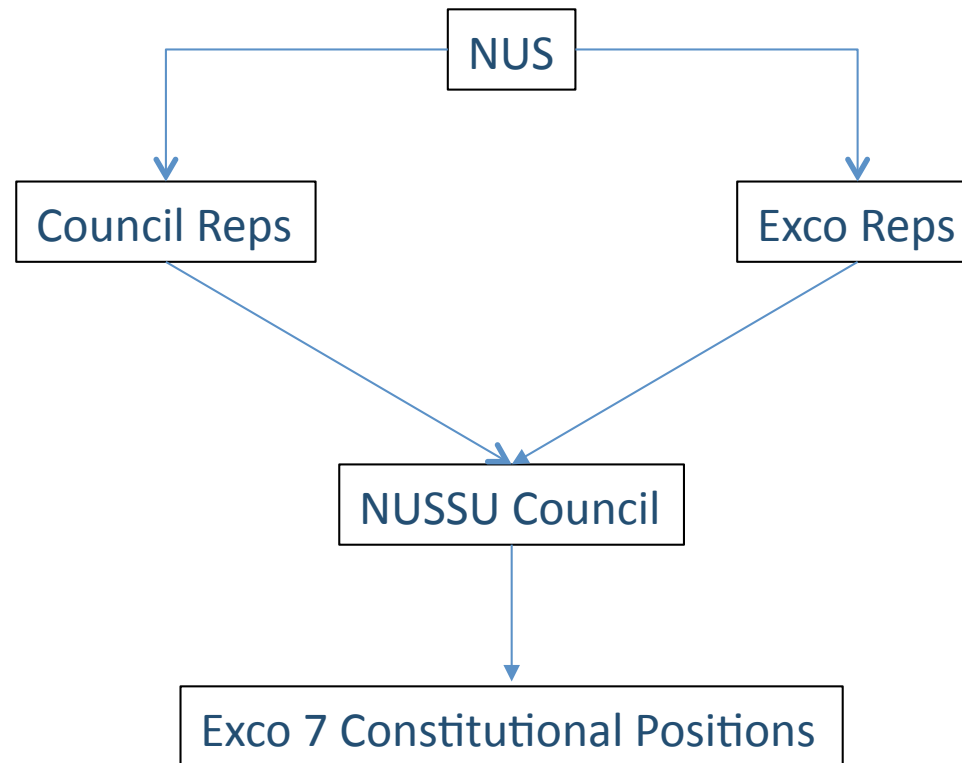
## **EXECUTIVE COMMITTEE ELECTIONS**

### **REFORM**

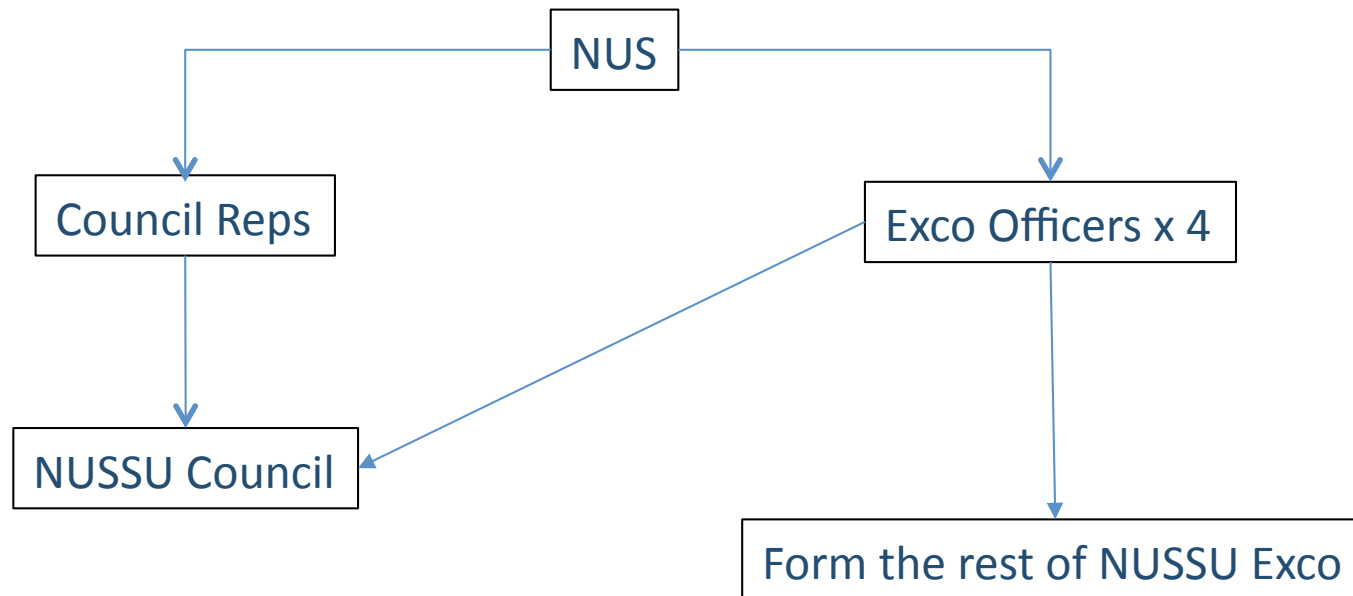
## Rationale

- Issue of double representation
  - University-wide interests and local interests
- The nature of representation vs. operations
- Legitimacy of the Council?
- Past examples – readiness of the Council?

## Existing Structure



## Proposed Structure



## Procedures

### Timeline

- Previously NUSSU Elections (First Council Meeting) on Week 5
- Suggested:
  - Week 1-2 Nominations
  - Week 2-4 Campaigning
  - Week 5 Open Elections
  - Week 5/6 First Council Meeting
- Flexibility of one week backforth

## Procedures

### Manpower

- Could suggest a distinct structure to govern and run the elections
  - Union Returning Officer and a team of people

### Nominations

- Still be as normal, but submission as a team of 4
  - Running for President, Vice President, General Secretary, Financial Secretary
- If any contest, will be team against team

## Procedures

### Campaigning

- A set of rules to be drafted out and adhered to for fair campaigning between candidates

### Polling

- Elections Commission will be established to facilitate voting
- Polling station placed in every faculty
- Votes tallied and allotted to candidate based on Council representation
  - Similar to American Electoral College
  - Ensure that students have a direct impact, yet not popularity contest

## Procedures

### Proportion of the Faculties:

- Faculty of Arts and Social Sciences: Three (3)
- School of Business: Three (3)
- School of Computing: Three (3)
- Faculty of Dentistry: Two (2)
- School of Design and Environment: Three (3)
- Faculty of Engineering: Three (3)
- Faculty of Law: Two (2)
- Yong Loo Lin School of Medicine: Three (3)
- Faculty of Science: Three (3)
- University Scholars' Club: Two (2)

All students in every faculty will get to vote.



## For Example: Elections in FASS

### Team A

- 1400 votes
- As winning team chosen by FASS, it gets allotted 3 votes out of 27 represented over all faculties.

### Team B

- 800 votes
- Even though there is a difference of 600 votes, there is no proportionality. Team B gets no votes from FASS.

The process will be repeated across all 10 faculties.

- Because the Council Representatives have not been elected as of this period, the votes are nominally represented, not physically.
- Procedural to ensure fairness
- Council will not be able to influence the election decisions

## What If...

### None of the teams get elected by the students?

- The results will be announced to the school accordingly, and by then the elected Council Reps of the incoming Council will be called on.
  - Take the place of the electorate and conduct a round of elections within the Council
  - Still elected based on team
  - Will ensure that apathy do not cause the whole structure to collapse
    - The 4 political offices of Exco In the new Council is vested with some form of legitimacy

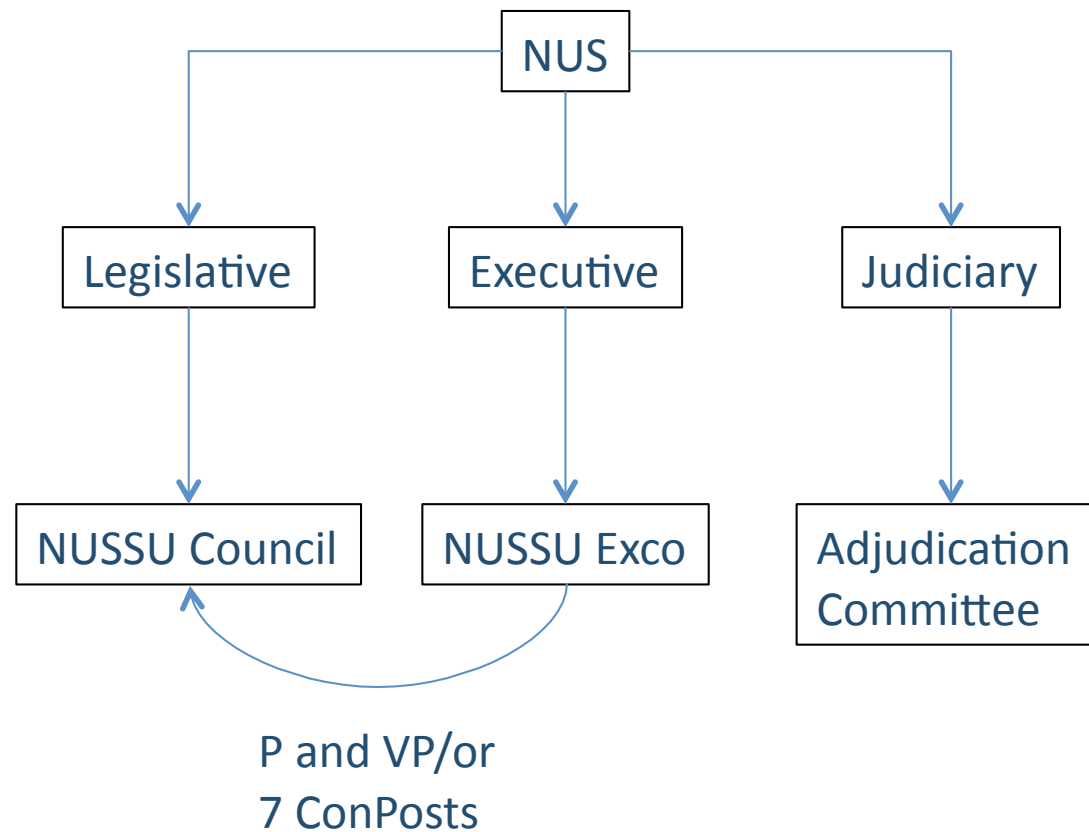
## NUSSU Exco

- The elected members will proceed to form his/her members (necessary manpower staffing)
- The list of compulsory positions will not change, i.e. the 7 Constitutional Positions
  - The need to distinct and separate a political office and a Constitutional Office
  - Suggests as well the addition of an Academics Secretary as a compulsory positions in the Exco to allow the organisation to be well-versed in academic affairs
- Namelist to be submitted and endorsed in the First Council Meeting/Exco Meeting
  - AGM appointment
  - Increased legitimacy

## NUSSU Exco

- How to ensure interested candidates are received?
  - Interview process similar to NUSSU Committees and Co-option
  - Recruitment efforts
  - Difference is that NUSSU Exco is endorsed and appointed by President, approved by Council; NUSSU Committees is not

## “Student Governance Structure”?



## Pros and Cons

Limitations (Cons)	Benefits (Pros)
Possible group-think	More representative
Short-time span in office	Empowerment of the Council into action
Requires endorsement from school administration to fully legitimize (NUS Regulation 9)	Distinction between two agencies - Decreases overlapping duties
Increase chances of abuse?	Increased responsiveness
Lack of balance? - Exco as a balance - Students as a balance - Clubs in Council as mutual balance?	Greater stake for all parties involved in their respective areas