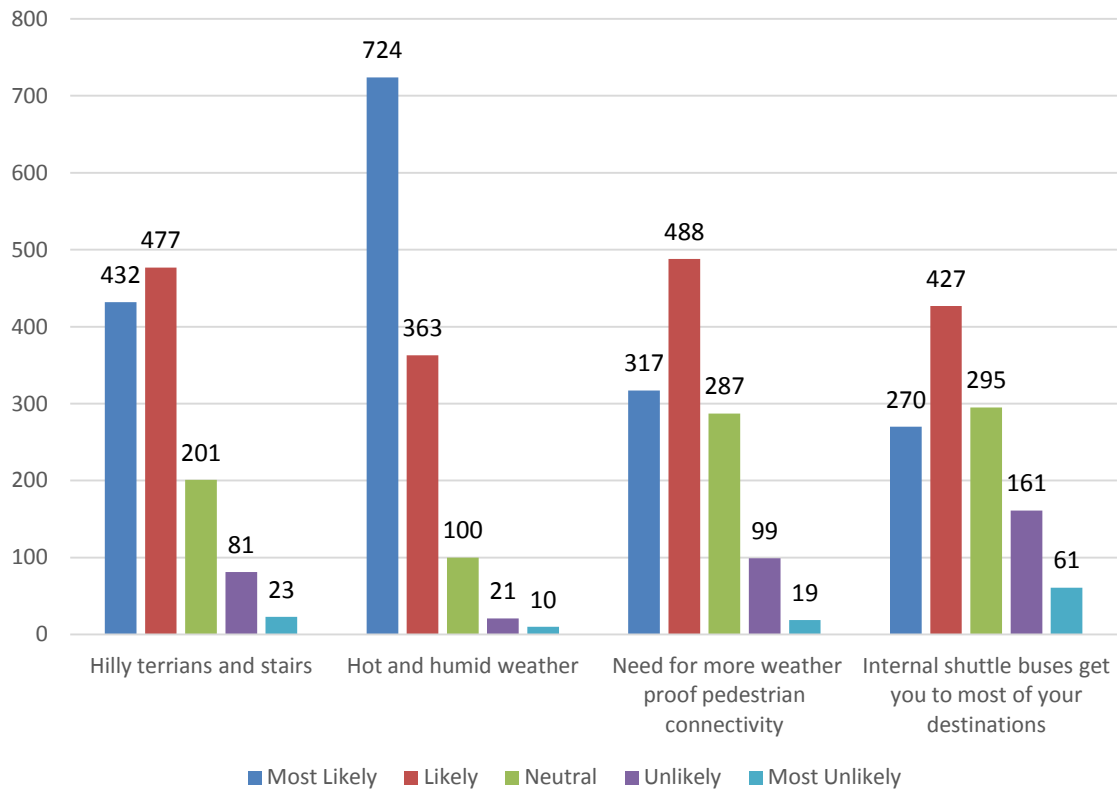


National University of Singapore Students' Union Welfare Pack Survey Analysis for AY 14/15 Semester 2

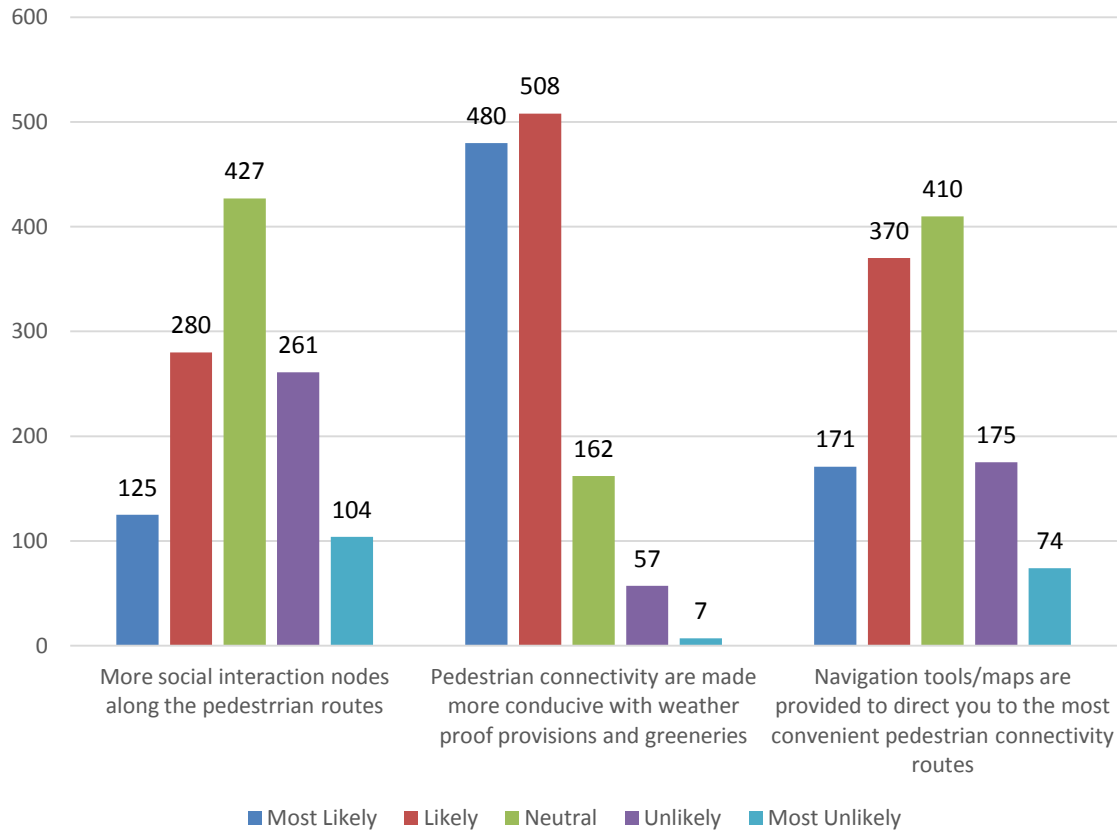
Analysis for the Faculty of Engineering

A. Campus Connectivity

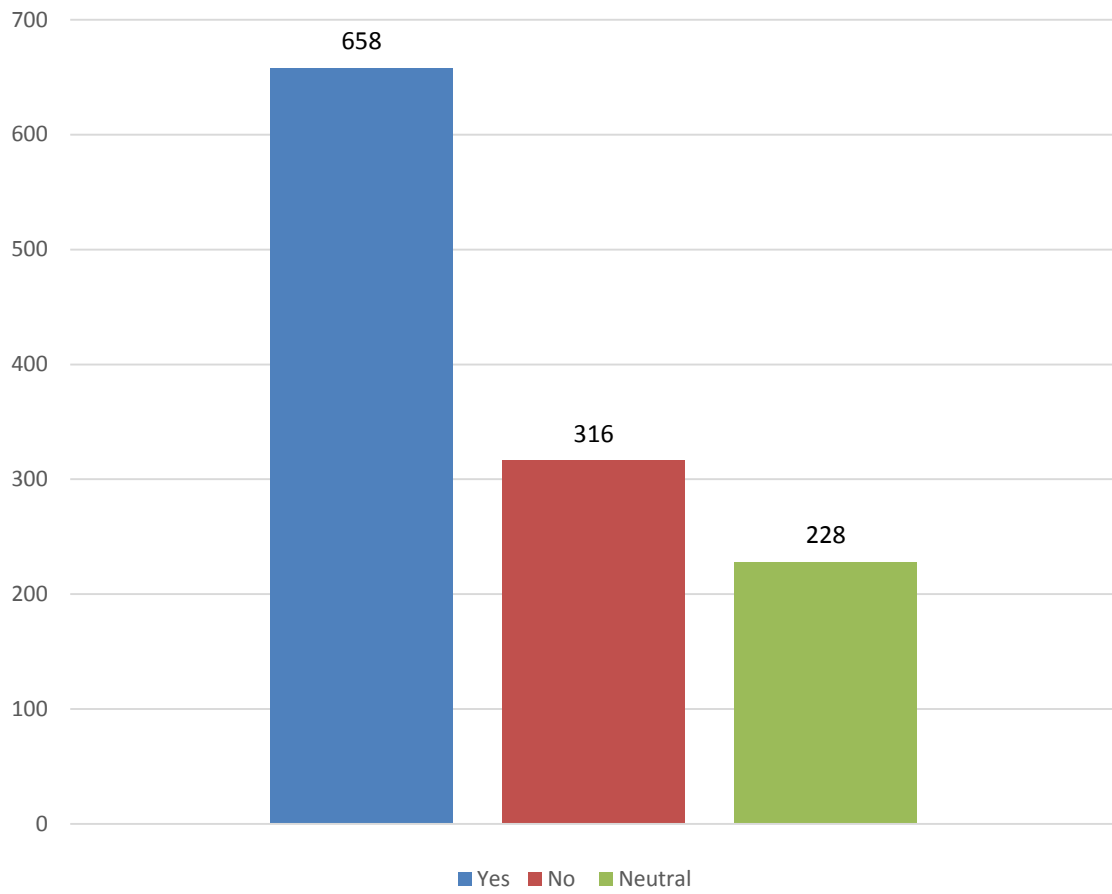
1: If walking is not your preferred mode of travel within the Kent Ridge campus, it is because of:



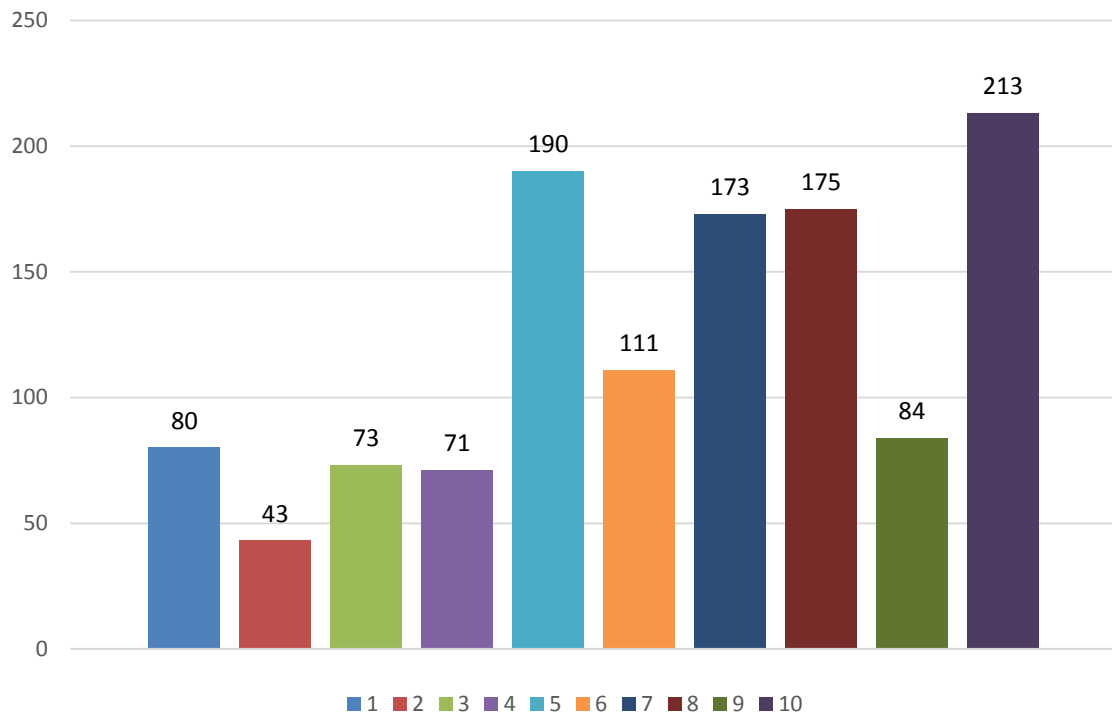
2: You would choose to walk between destinations more frequently if the following changes are made:



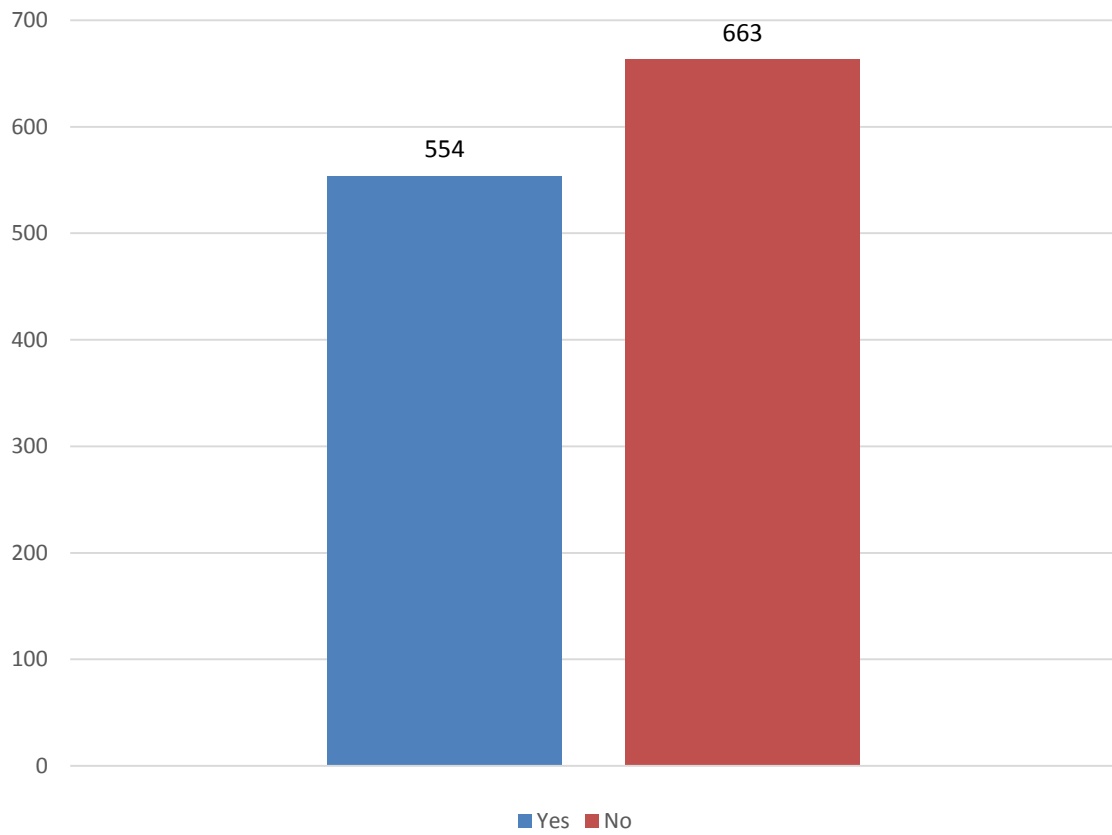
**3a. Would you consider riding a scooter
(electric or non-electric) around campus?**



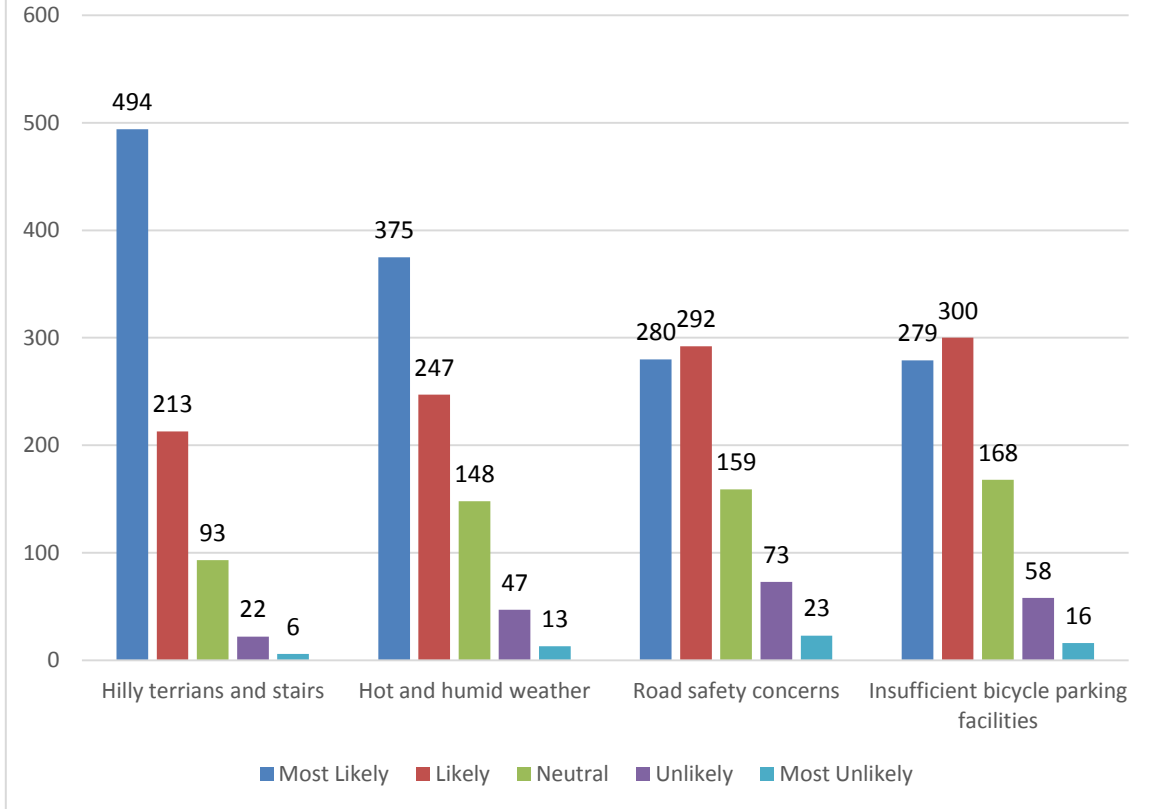
3b. To what extent do you think it is a good idea to have the rental of scooters (electric or non-electric) for students to get to places in campus?



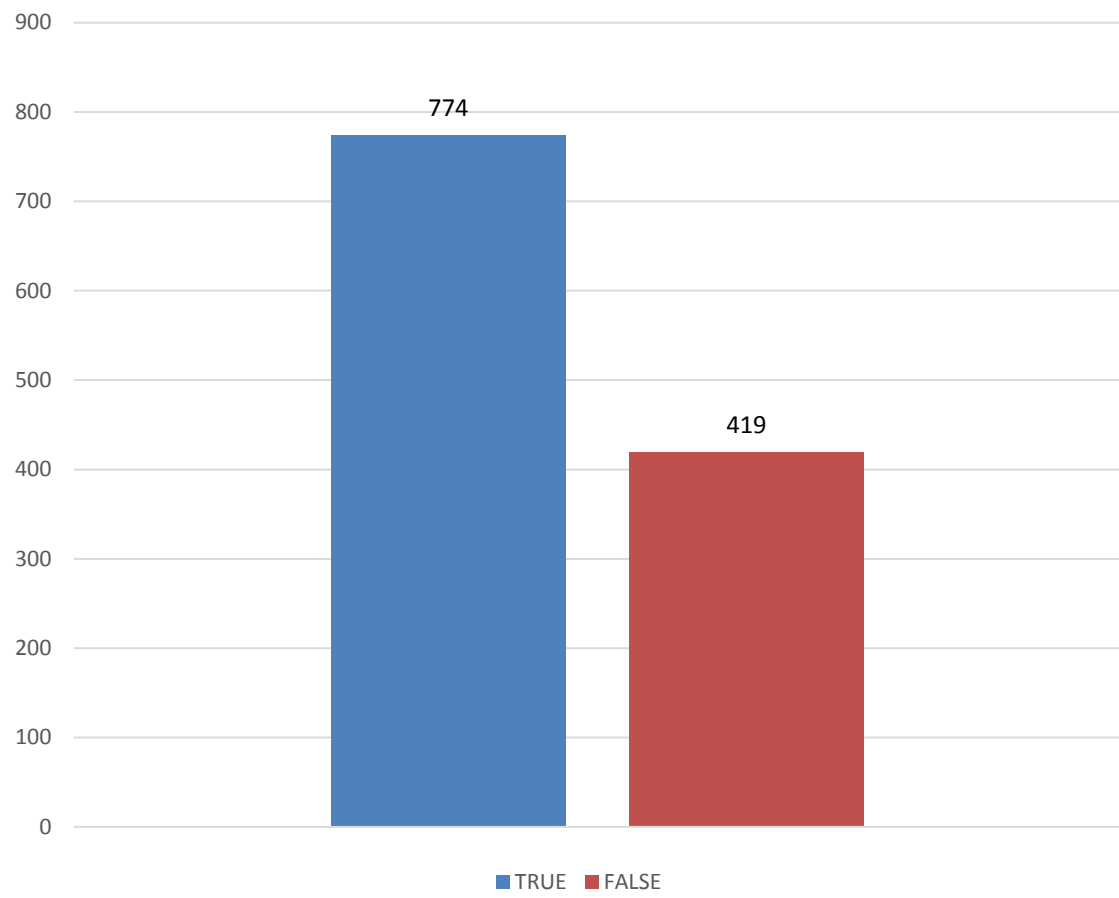
4. Would you consider riding a bicycle in Kent Ridge campus?



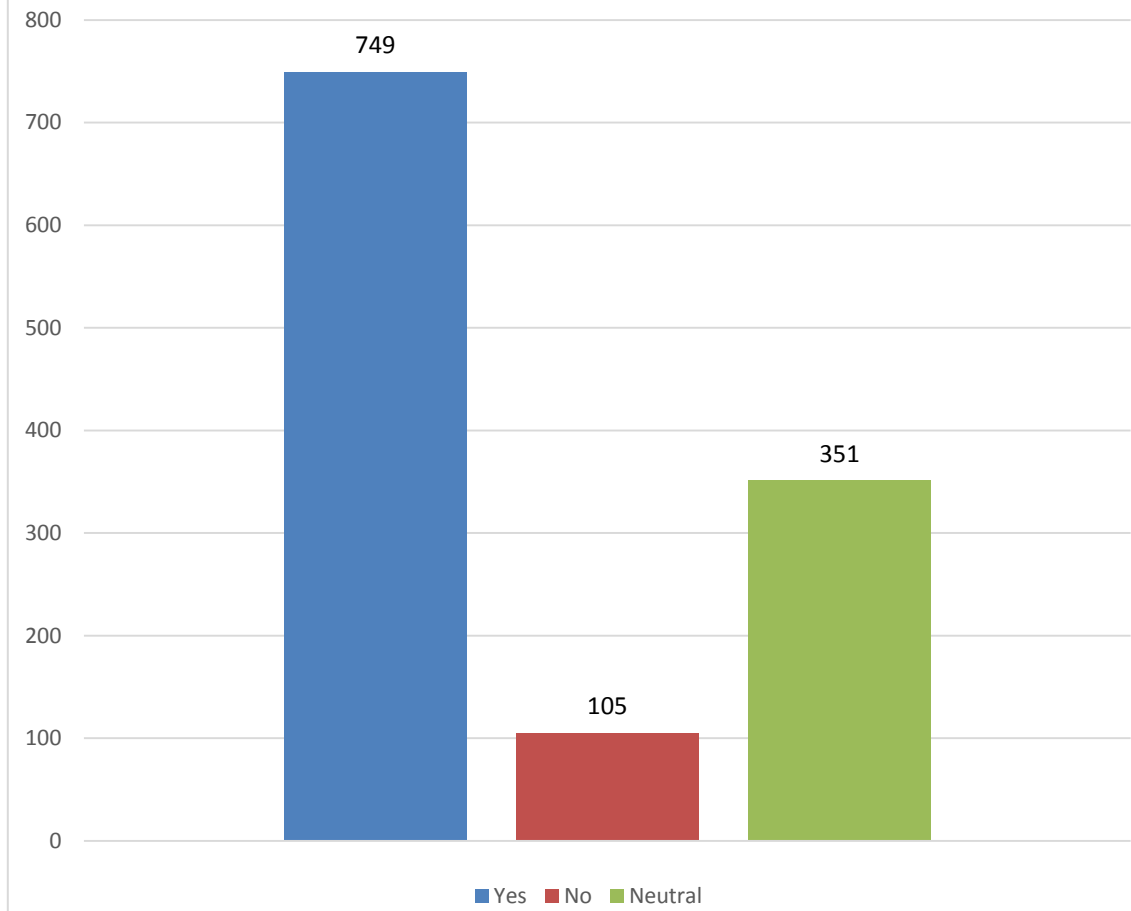
5. If “No”, cycling is not the preferred mode of travel within Kent Ridge Campus because of:



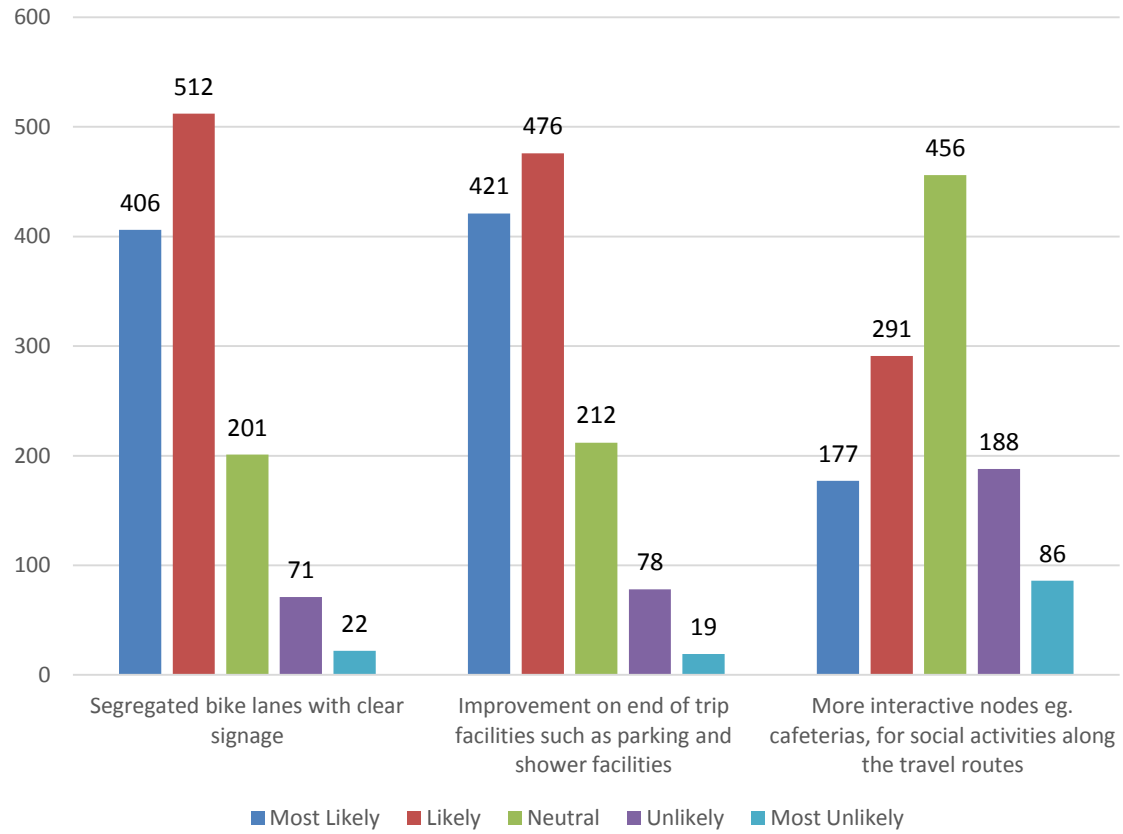
5e) You do not own a bicycle



5f) Do you like to cycle?

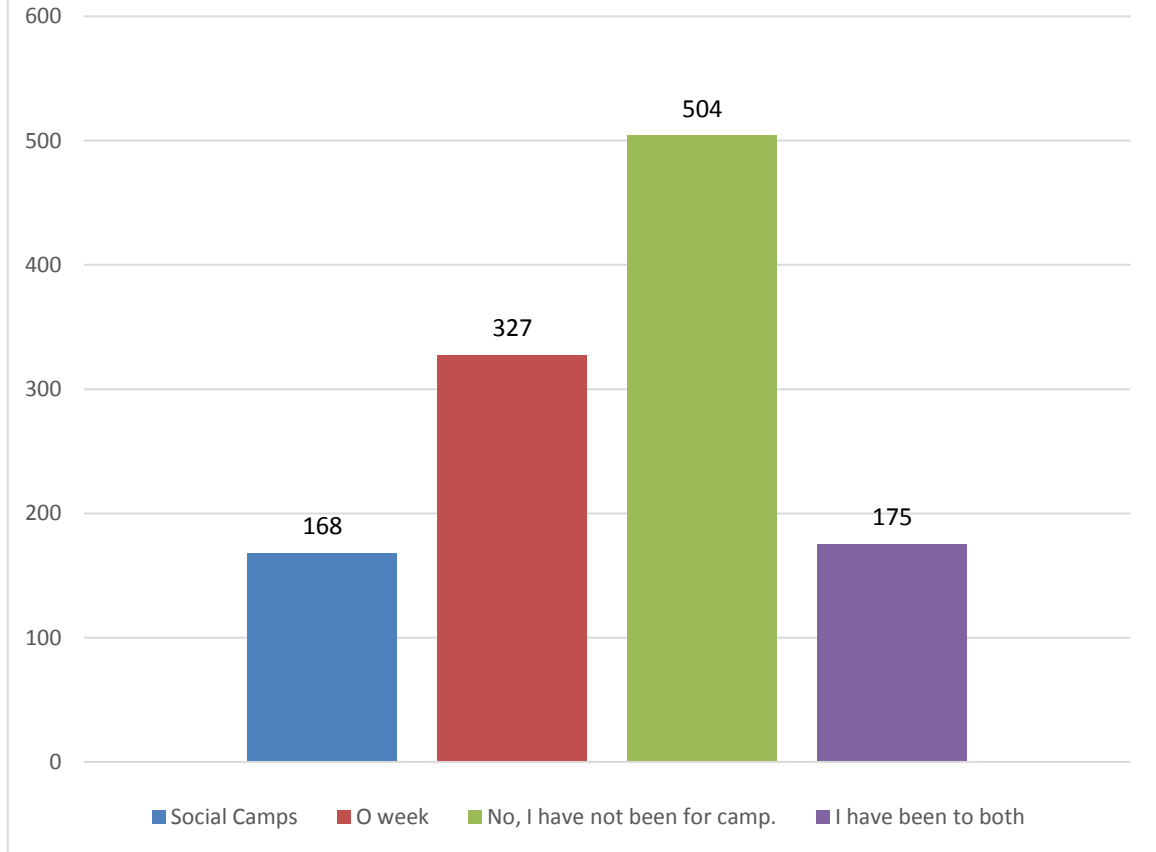


6. Cycling may become a frequent mode for travel for you if the following changes are made:

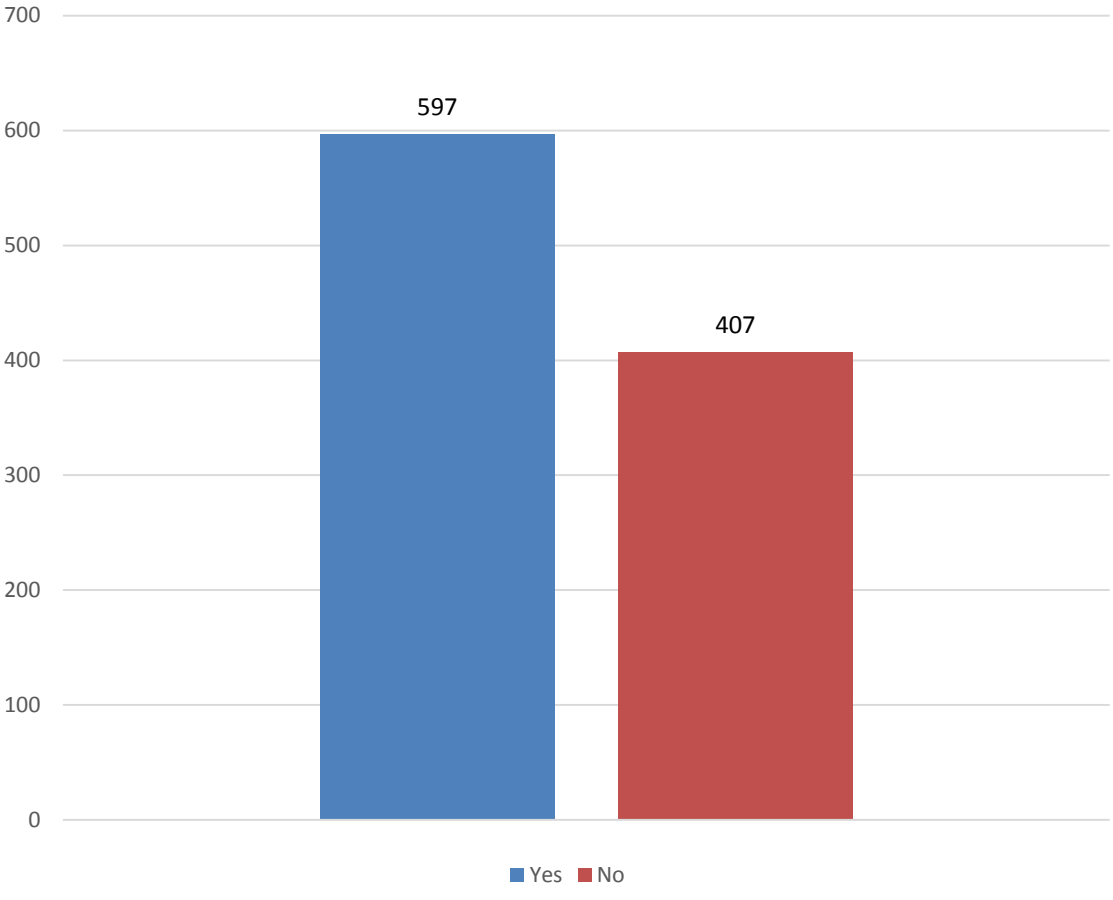


B. Social Camps and O-week

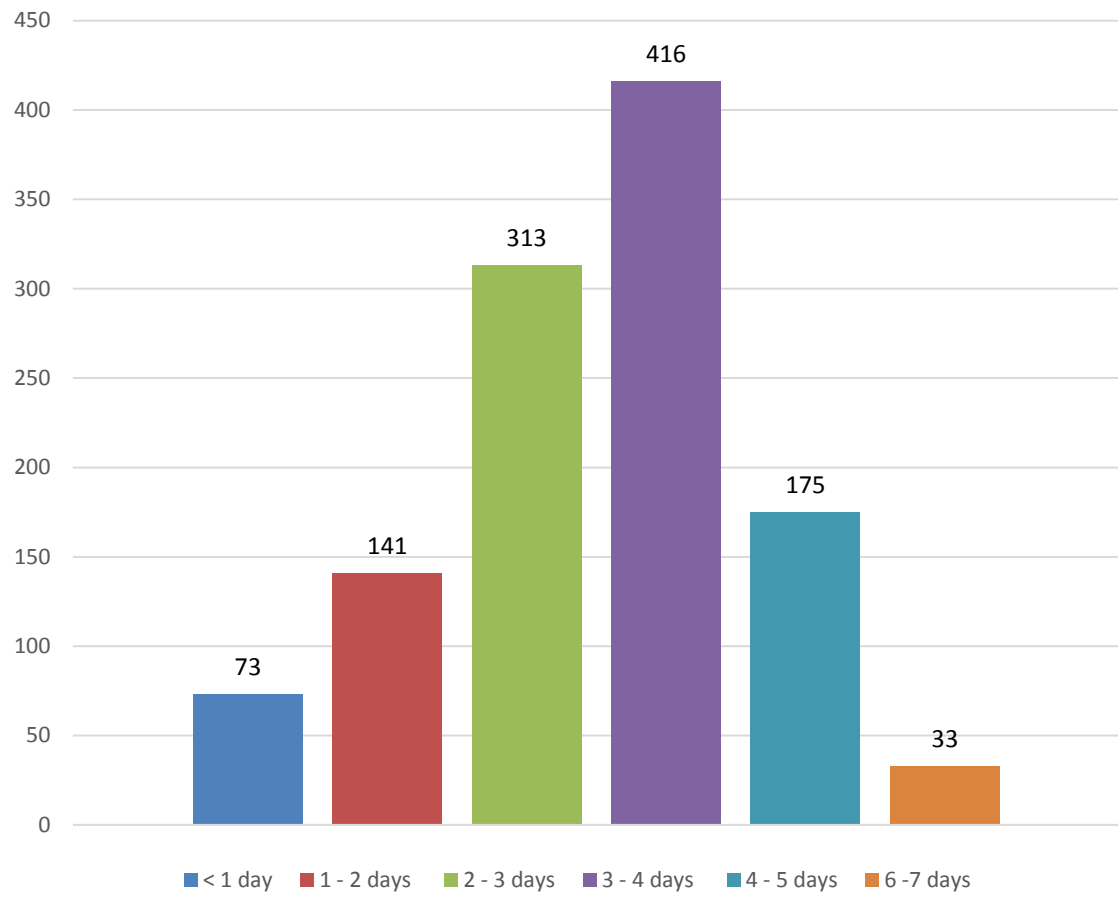
8. Have you been for your faculty's social camp (e.g. Arts Camp/Engin Camp) or O week?



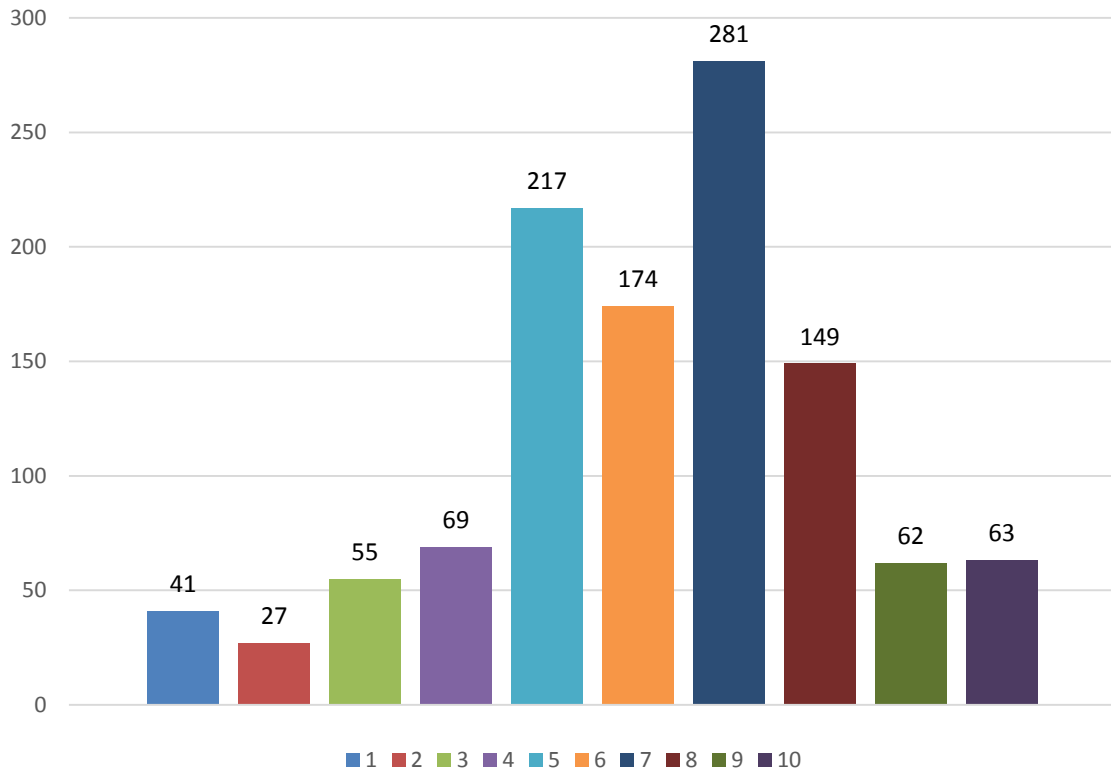
9. Did you enjoy the activities held during the camp?



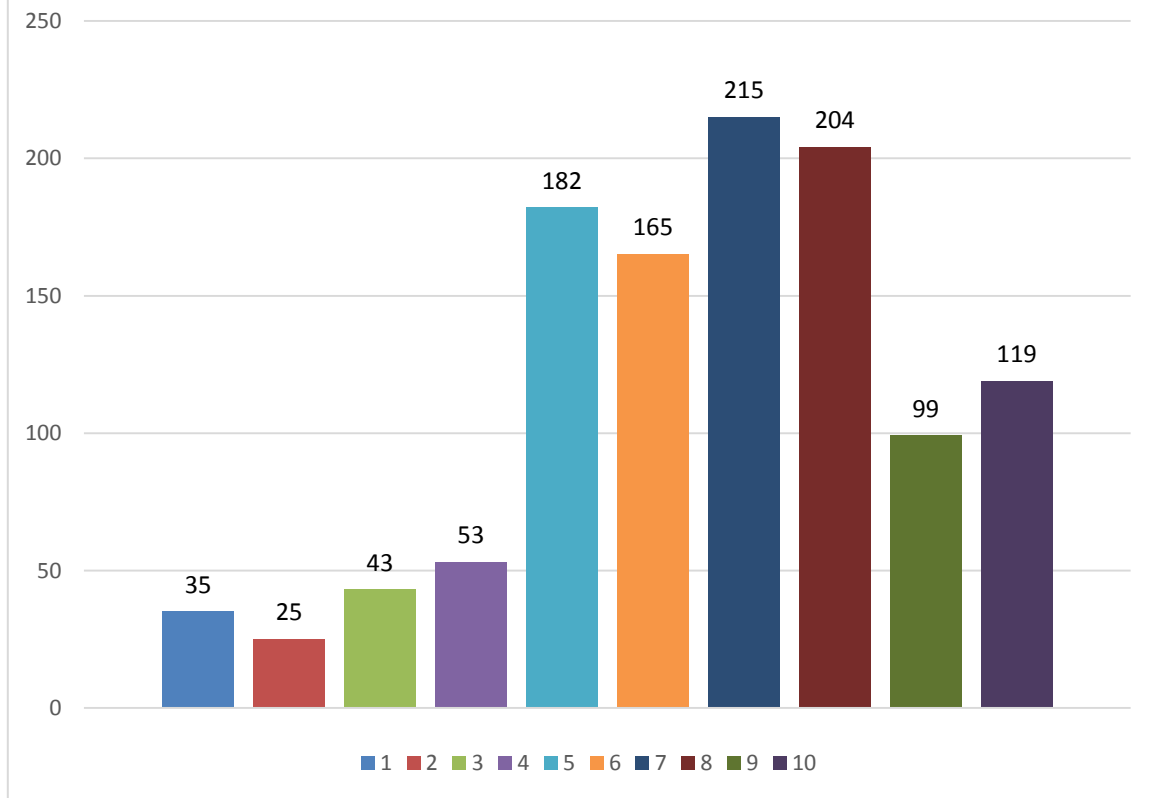
10. What do you think is the appropriate length for faculty social camps?



11a. On a scale of 1 to 10 how effective are orientation camps in helping students feel a sense of belonging towards his/her faculty?



11b. On a scale of 1 to 10 how important are orientation camps to a student's university experience?



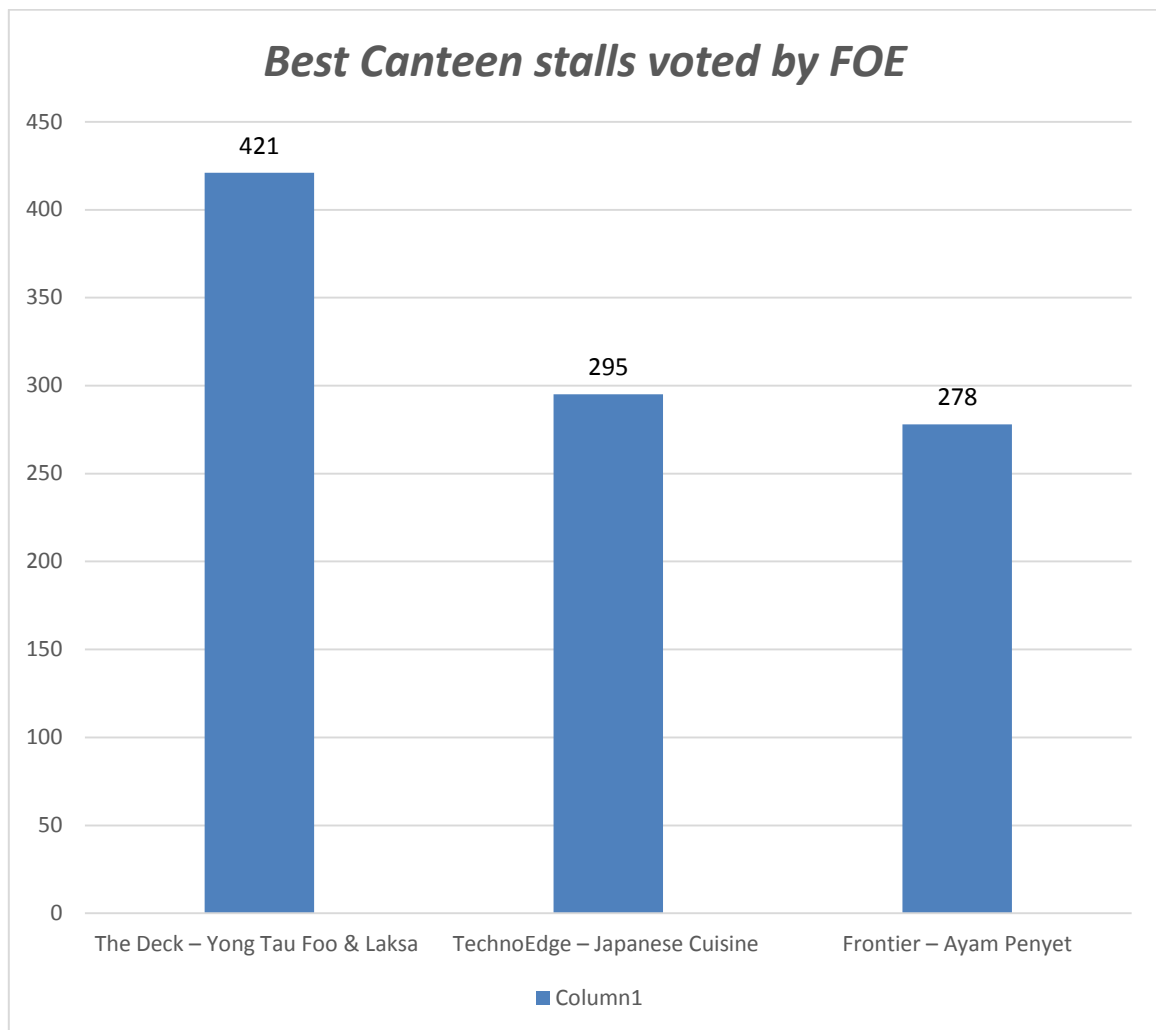
C. NUS Food Contest

Best Canteen stall

1st : The Deck – Yong Tau Foo & Laksa with 421 votes

2nd: TechnoEdge – Japanese Cuisine with 295 votes

3rd: Frontier -- Ayam Penyet with 278 votes

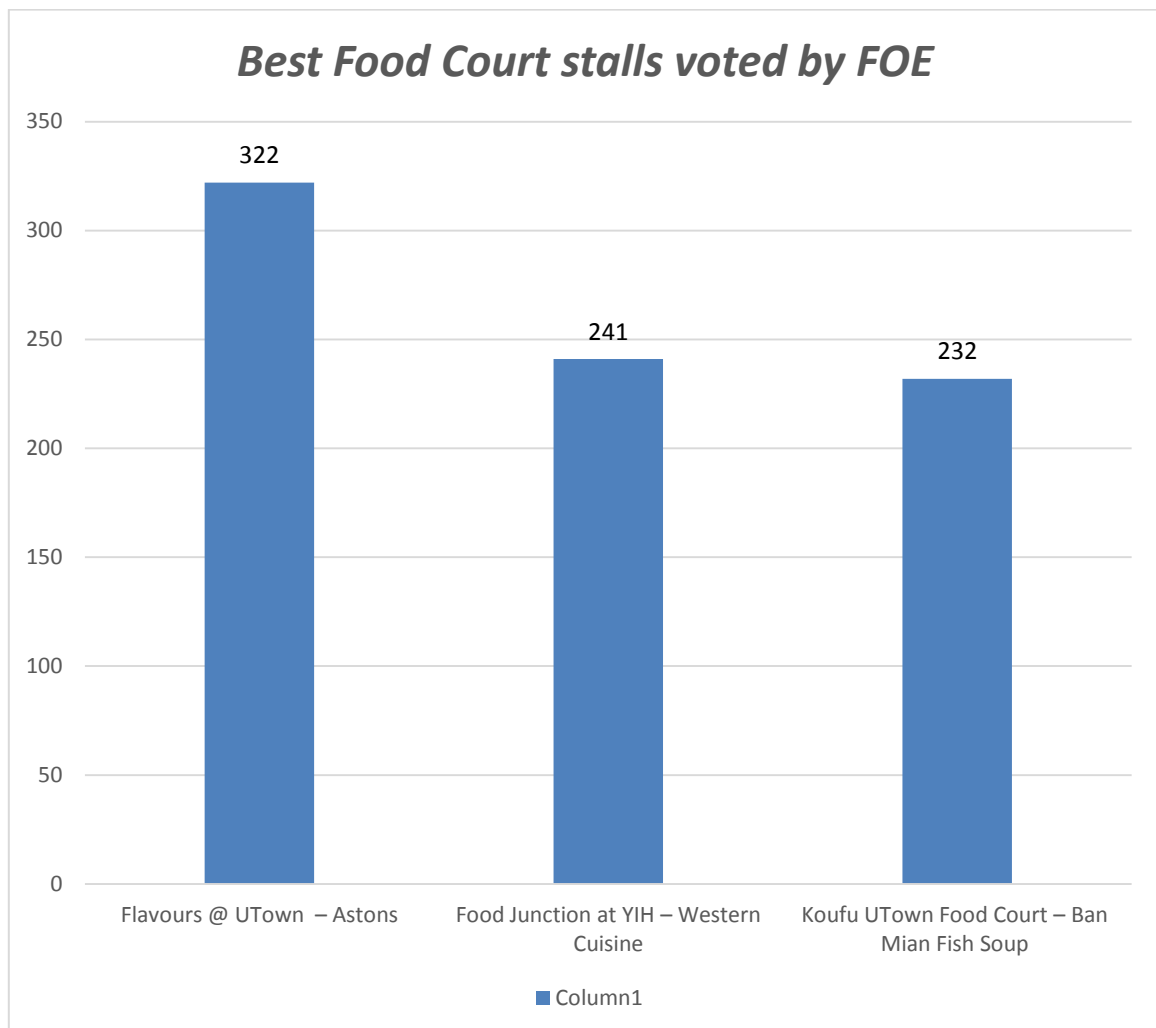


Best Food Court stall

1st : Flavours @ UTown – Astons with 322 votes

2nd: Food Junction at YIH – Western Cuisine with 241 votes

3rd: KouFu UTown – Ban Mian Fish Soup with 232 votes

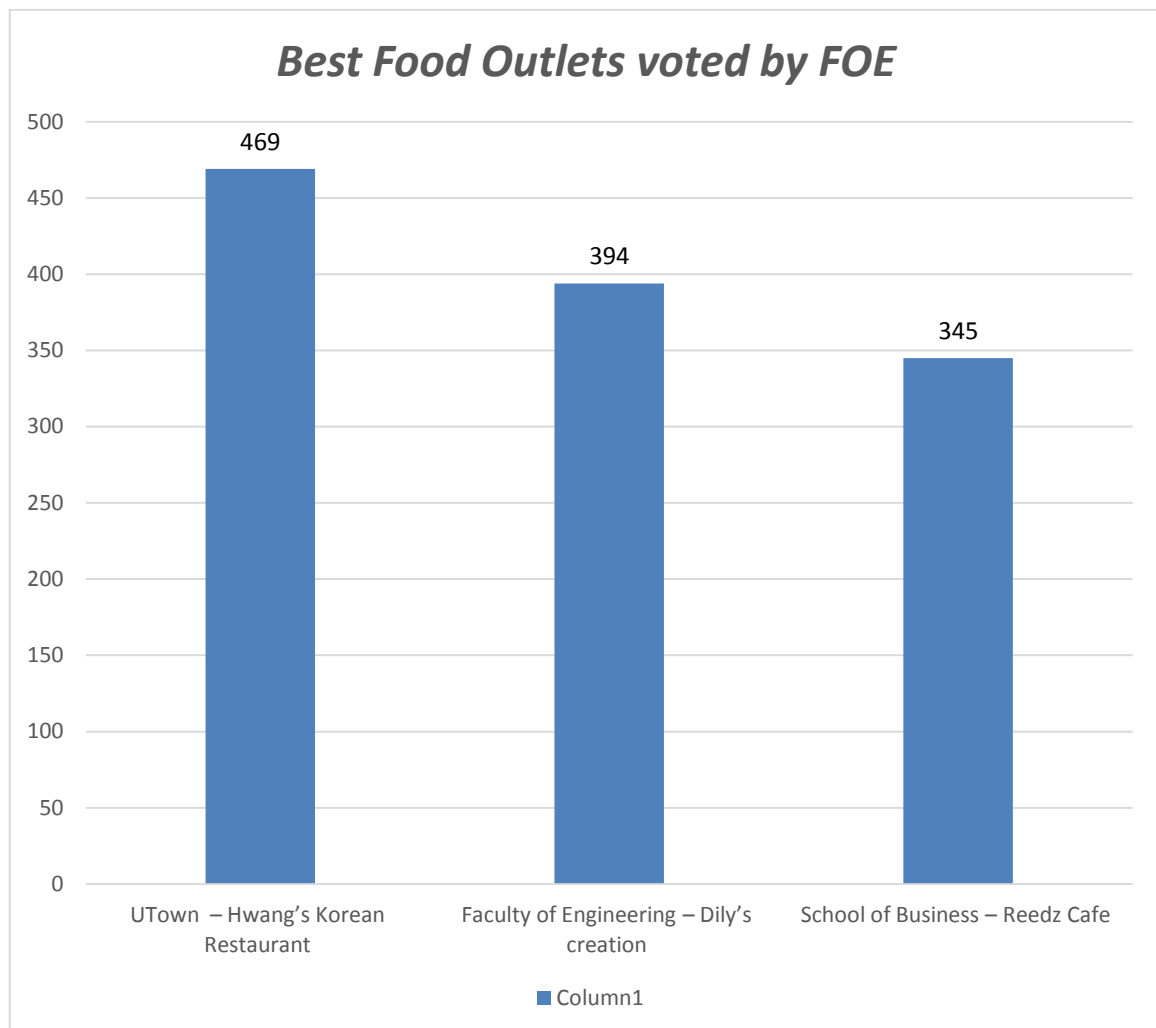


Best Food Outlet

1st : UTown – Hwang’s Korean Restaurant with 469 votes

2nd: Faculty of Engineering – Dily’s creation with 394 votes

3rd: School of Business – Reedz Cafe with 345 votes



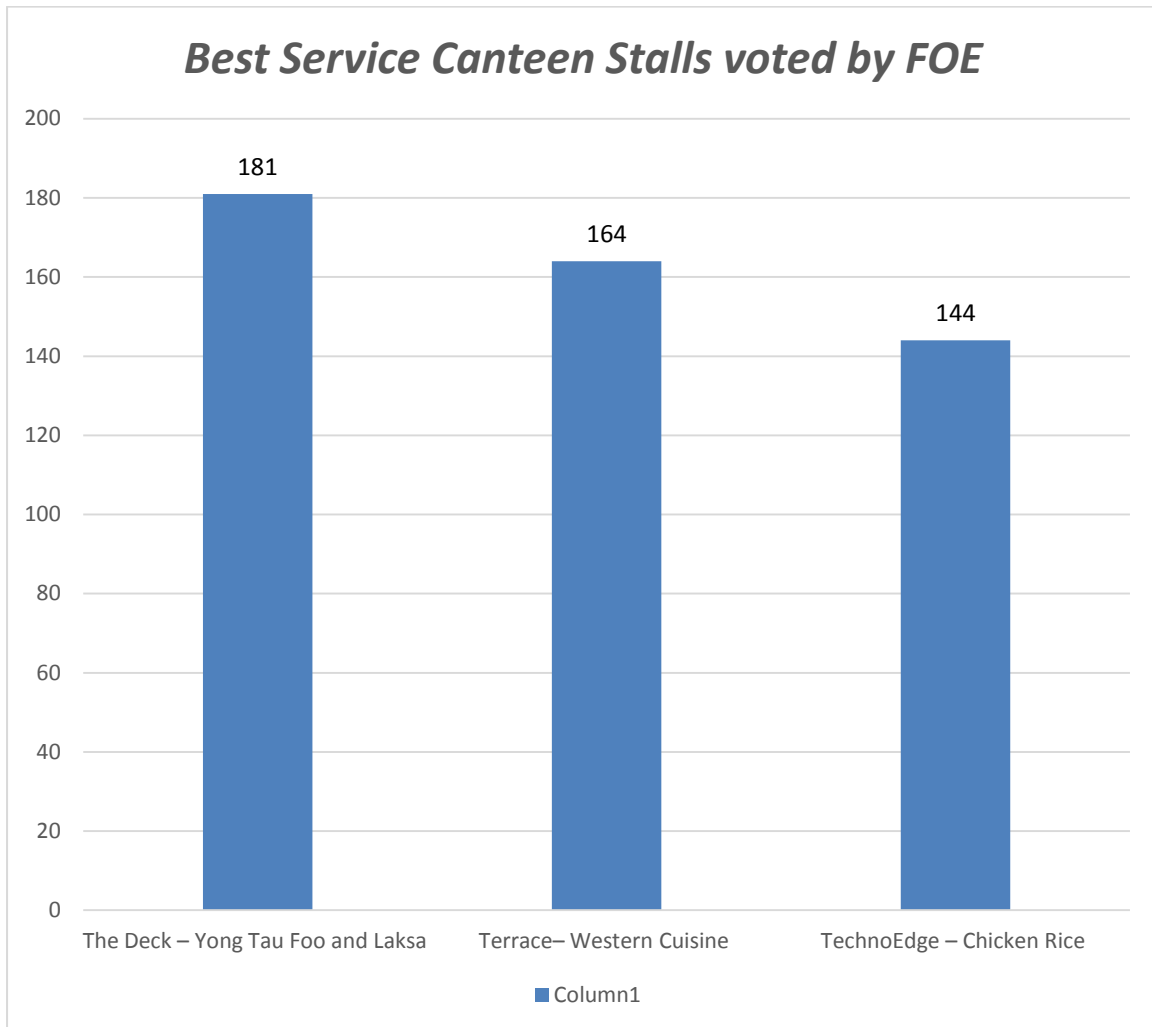
C1: Service Star Award

Canteen stalls with the Best Service

1st : The Deck – Yong Tau Foo and Laksa with 181 votes

2nd: Terrace– Western Cuisine with 164 votes

3rd: TechnoEdge – Chicken Rice with 144 votes

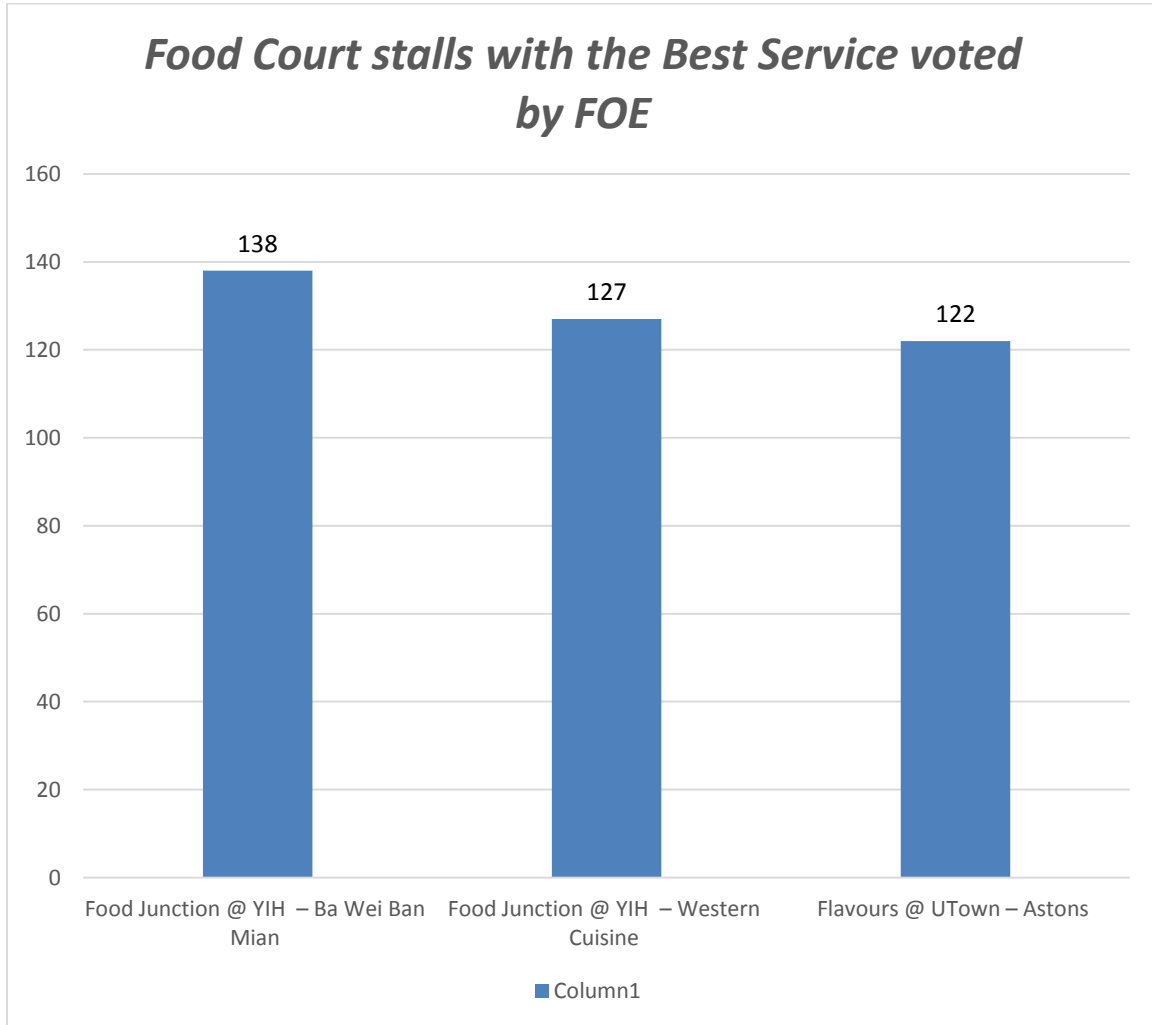


Food Court stalls with the Best Service

1st : Food Junction @ YIH – Ba Wei Ban Mian with 138 votes

2nd: Food Junction @ YIH – Western Cuisine with 127 votes

3rd: Flavours @ UTown – Astons with 122 votes

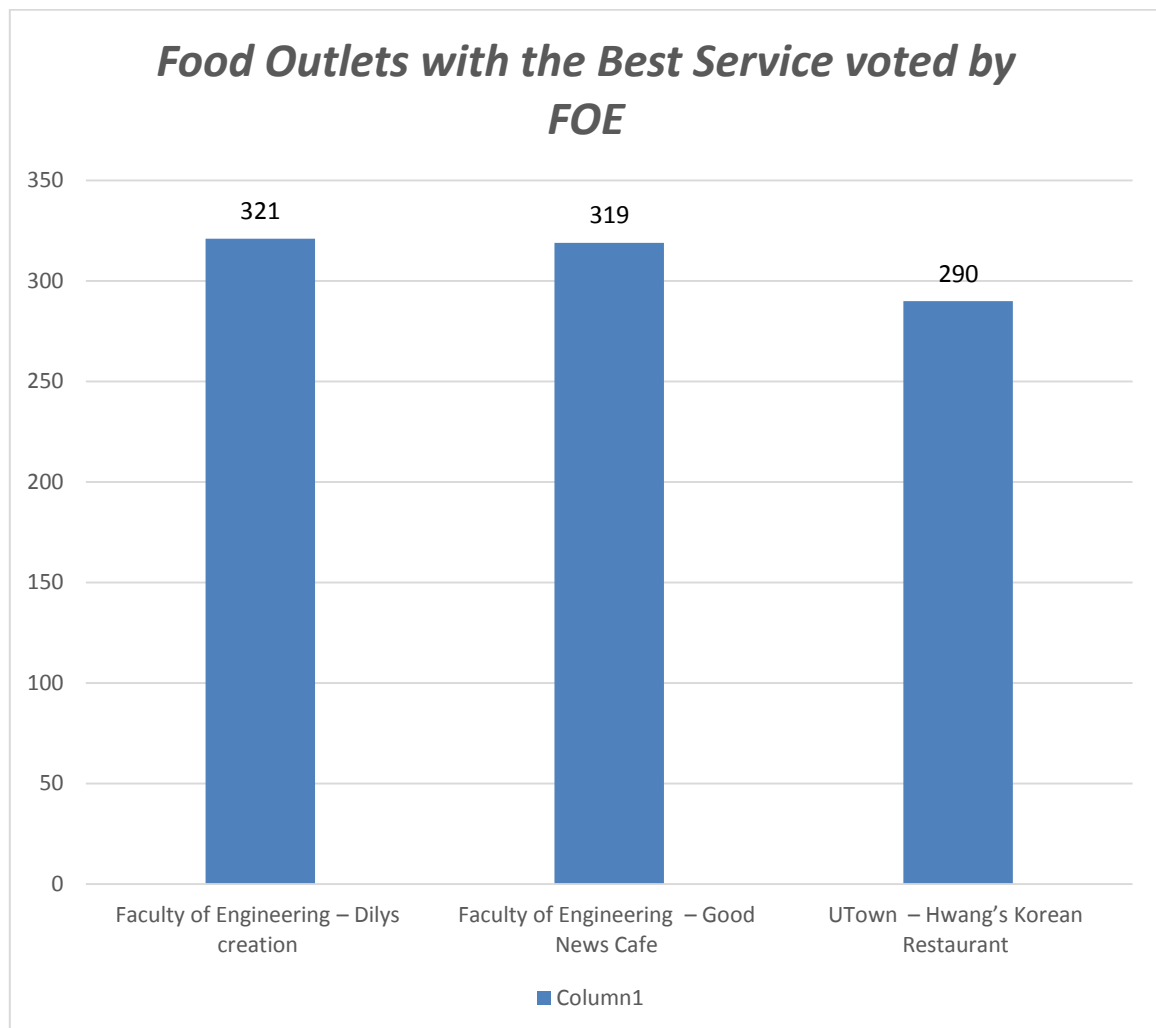


Food Outlet with the Best service

1st : Faculty of Engineering – Dilys creation with 321 votes

2nd: Faculty of Engineering – Good News Cafe with 319 votes

3rd: UTown – Hwang’s Korean Restaurant with 290 votes



C1: Healthiest Meal category

Canteen stalls with the Healthiest meal

1st : The Deck – Yong Tau Foo and Laksa with 382 votes

2nd: Flavours @ UTown Food Court – Mixed Vegetable rice with 260 votes

3rd: Flavours @ UTown Food Court – Noodles and Chicken rice with 111 votes

