

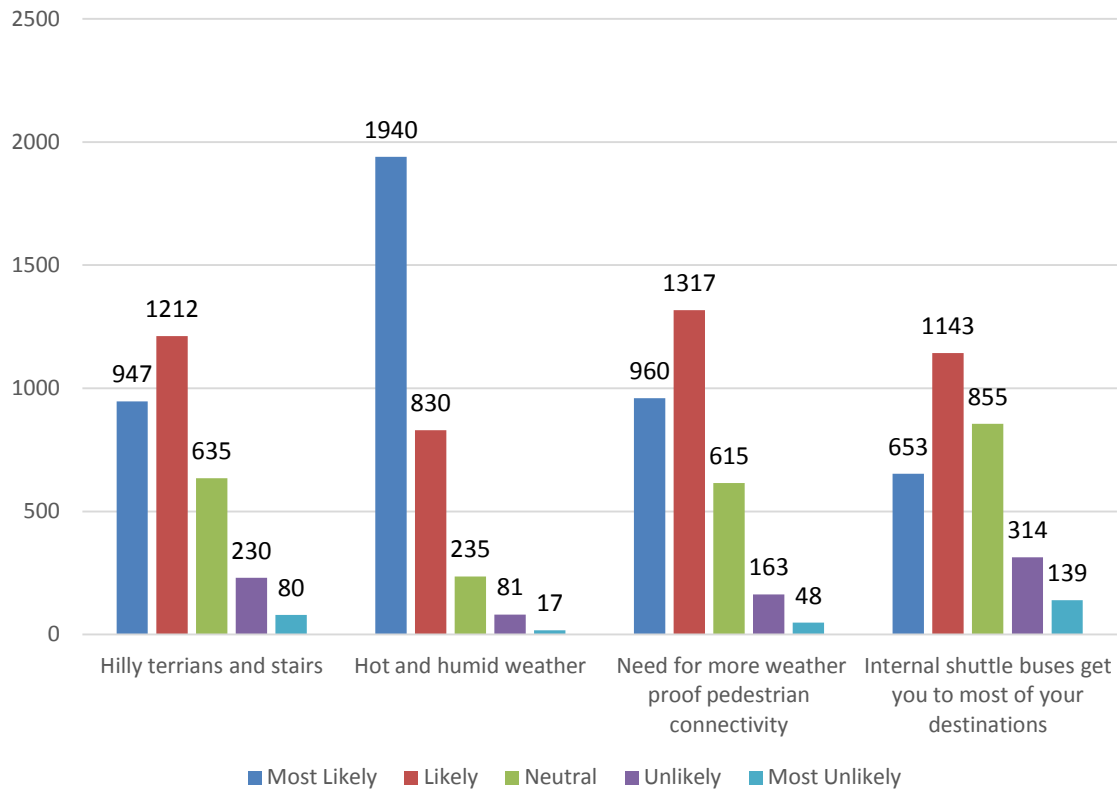
# National University of Singapore Students' Union Welfare Pack Survey Analysis for AY 14/15 Semester 2

---

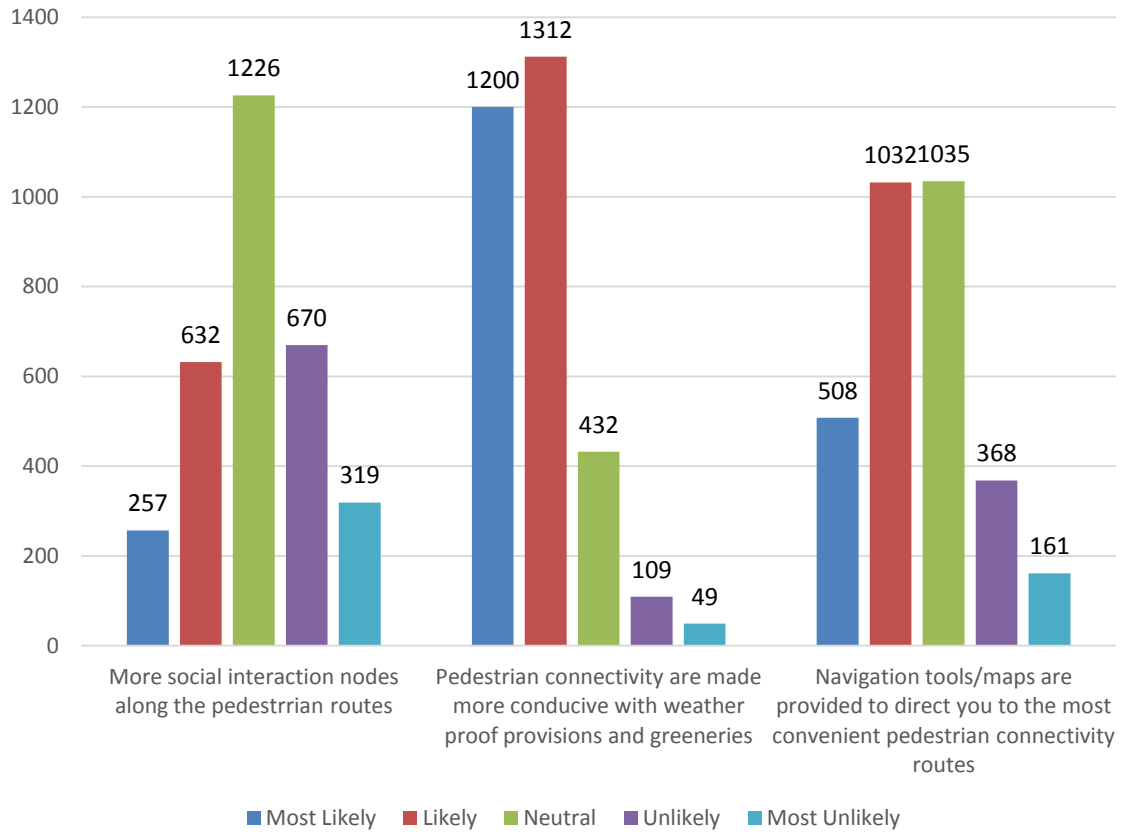
*Analysis for the Faculty of Science*

## A. Campus Connectivity

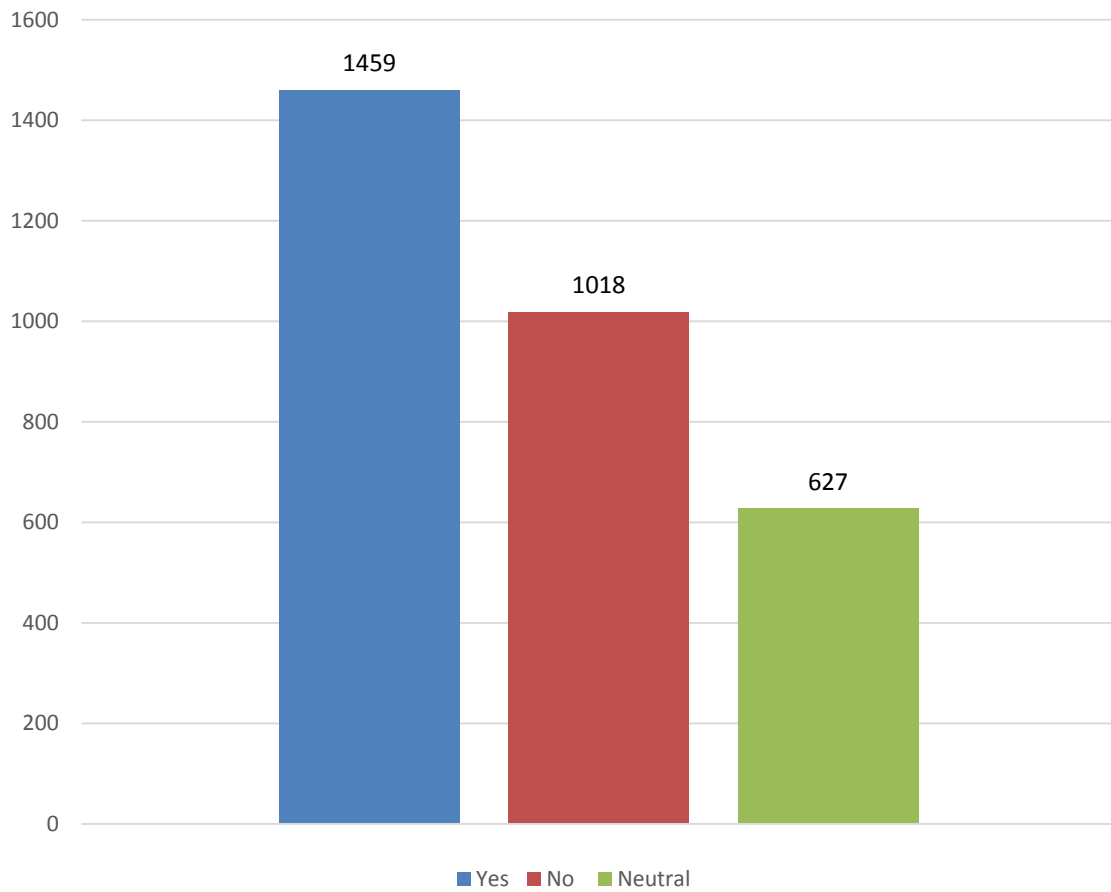
**1: If walking is not your preferred mode of travel within the Kent Ridge campus, it is because of:**



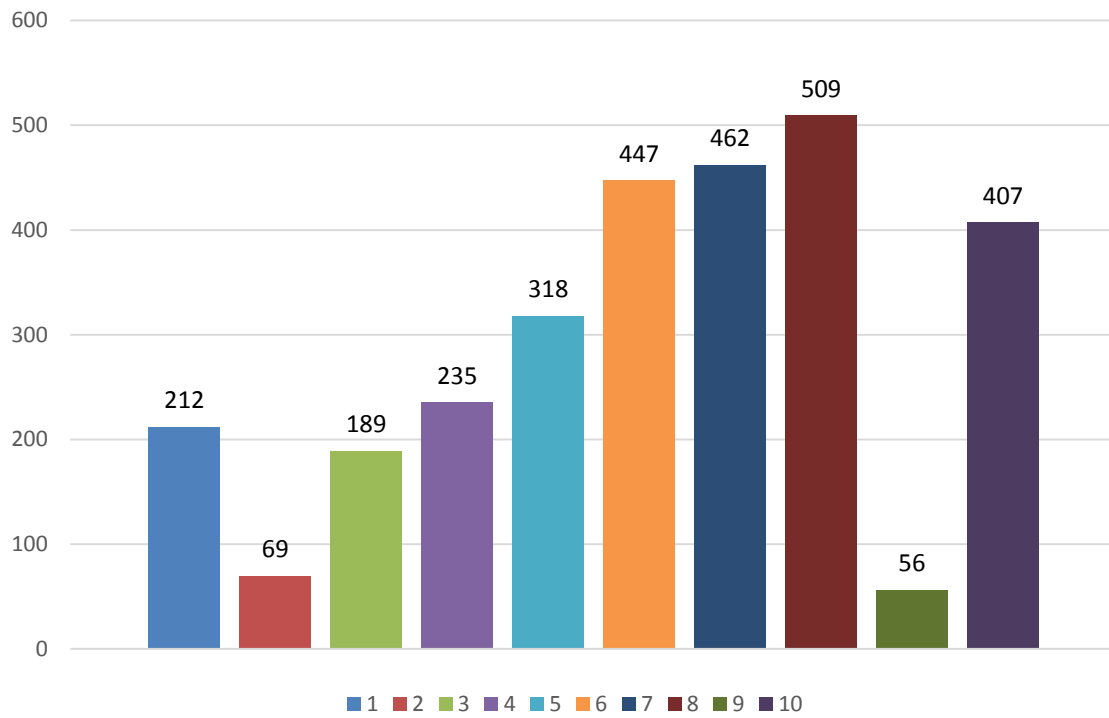
**2: You would choose to walk between destinations more frequently if the following changes are made:**



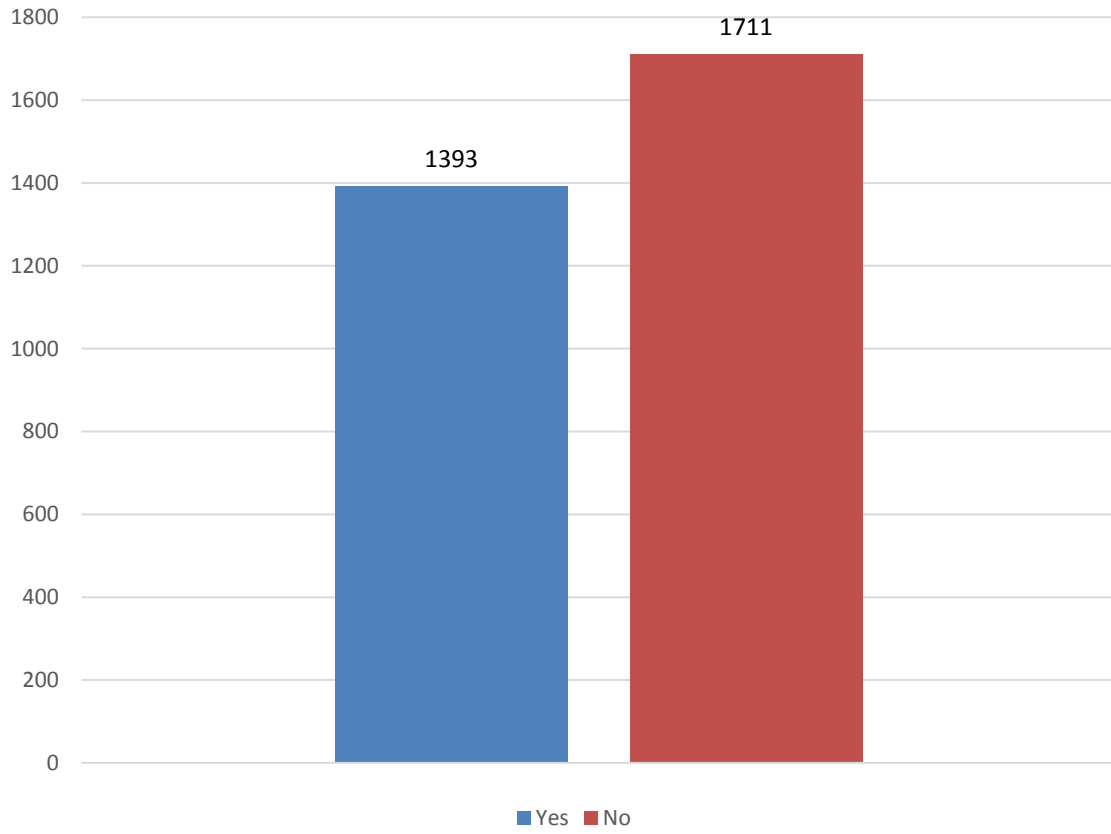
**3a. Would you consider riding a scooter  
(electric or non-electric) around campus?**



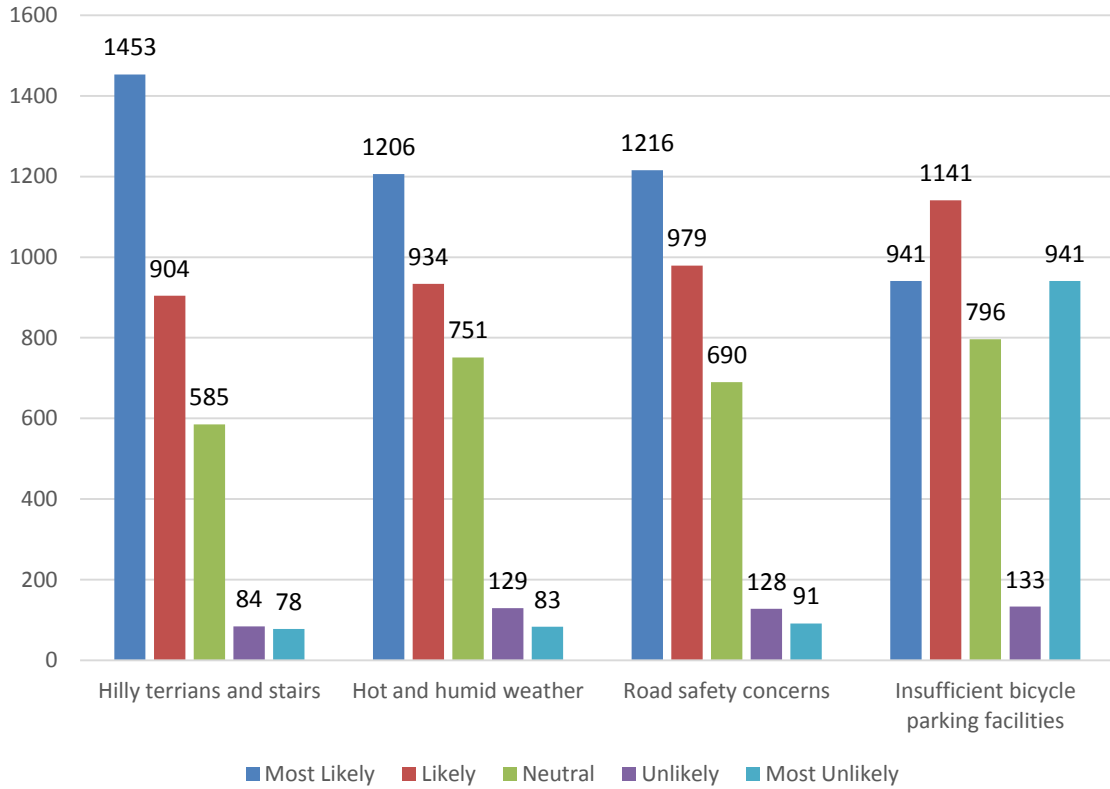
**3b. To what extent do you think it is a good idea to have the rental of scooters (electric or non-electric) for students to get to places in campus?**



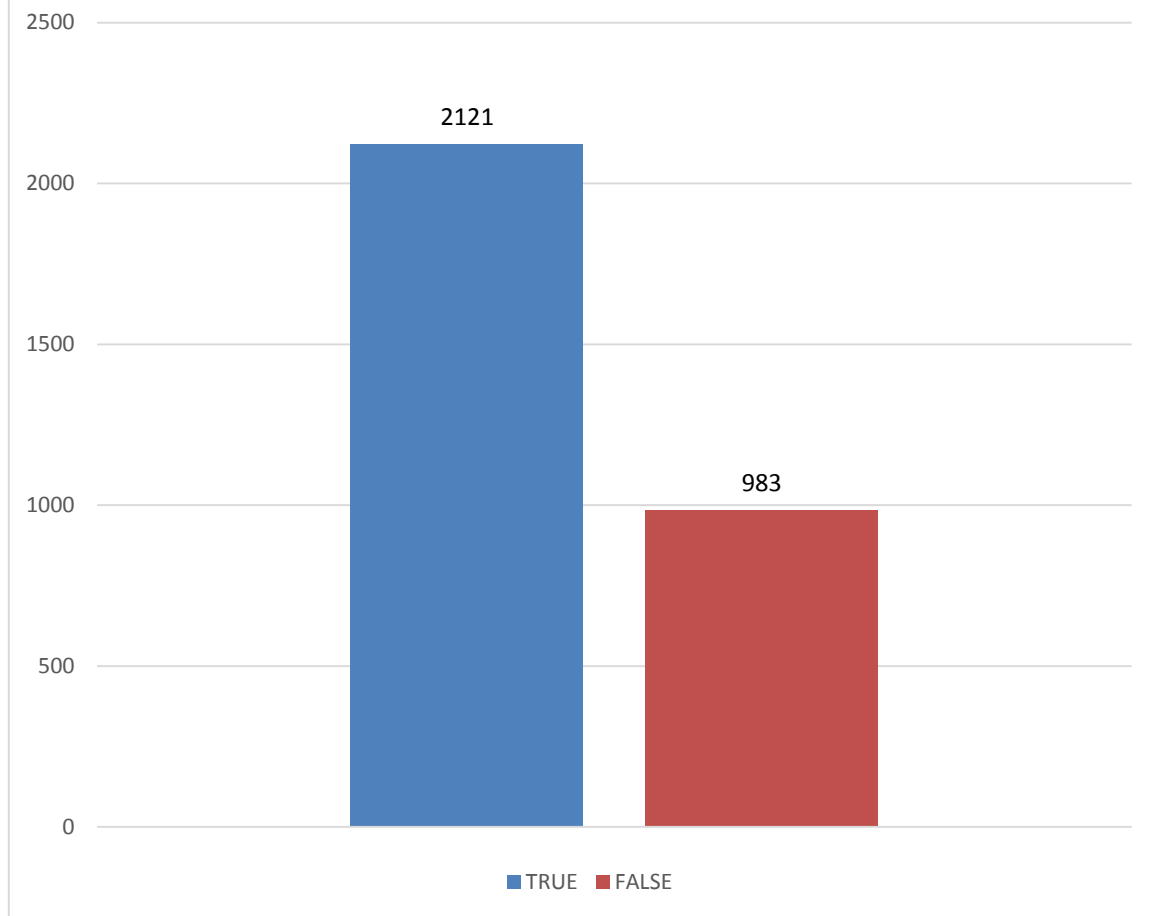
**4. Would you consider riding a bicycle in Kent Ridge campus?**



**5. If “No”, cycling is not the preferred mode of travel within Kent Ridge Campus because of:**

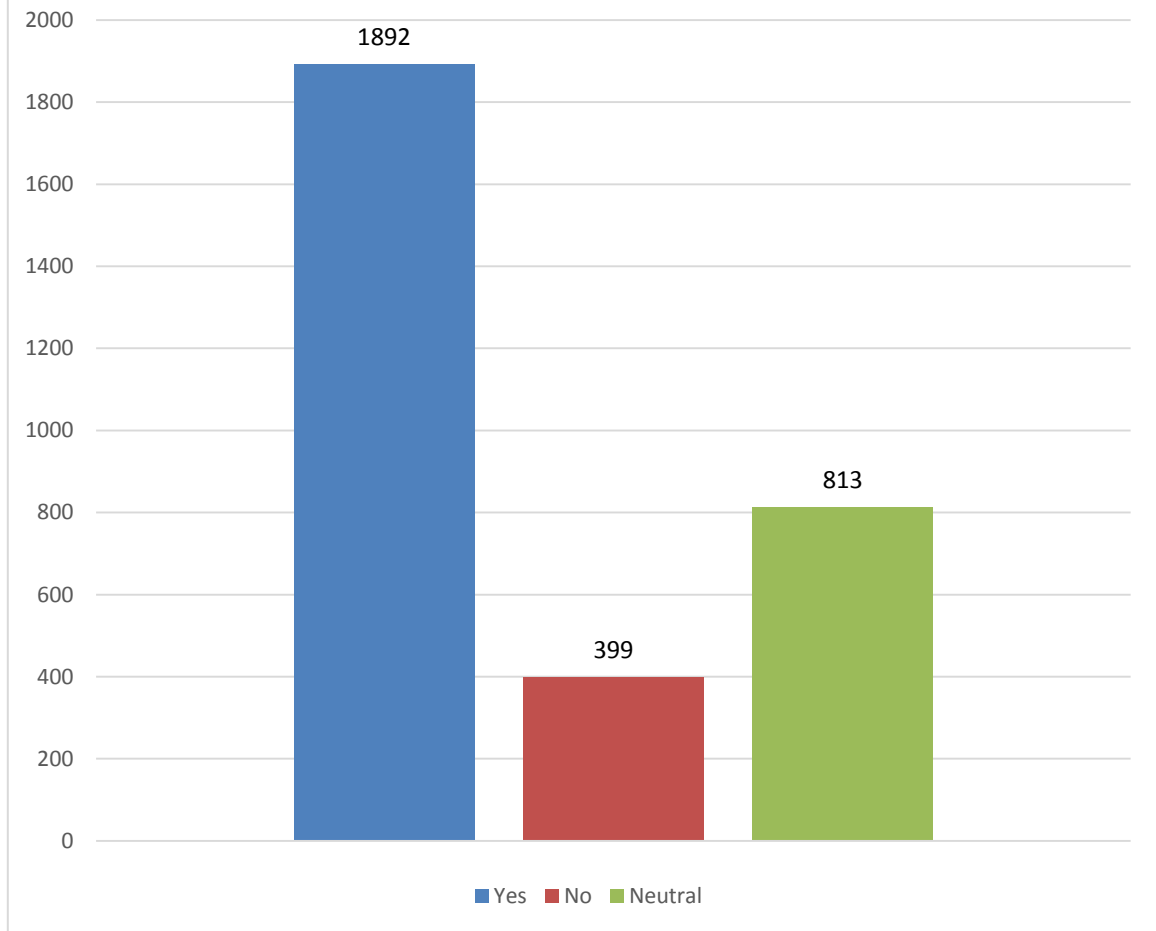


### 5e) You do not own a bicycle

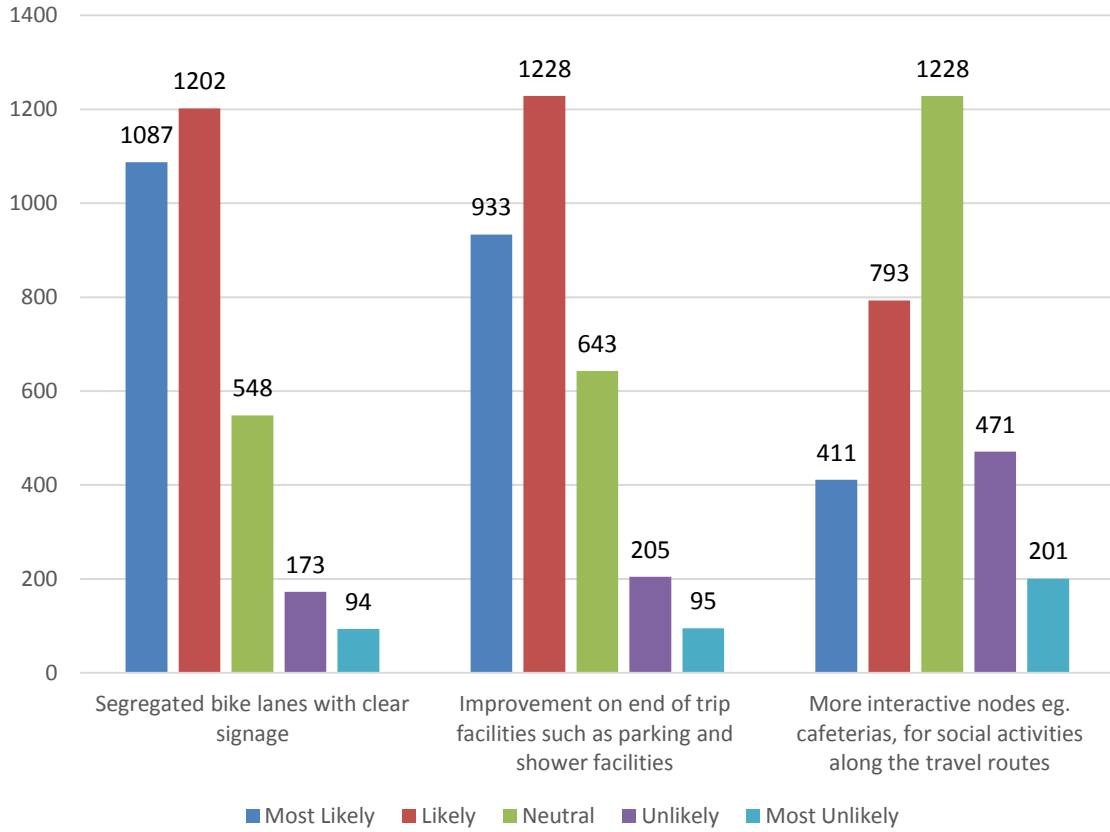




### 5f) Do you like to cycle?

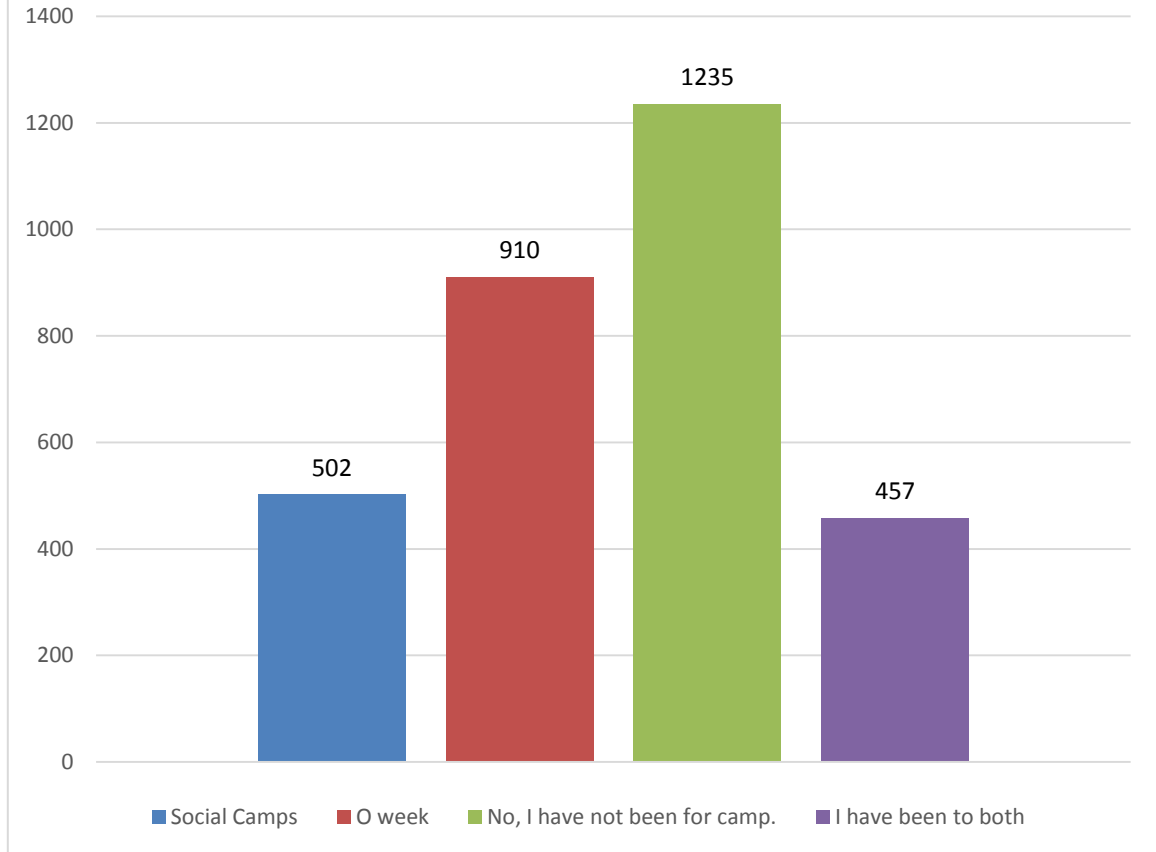


**6. Cycling may become a frequent mode for travel for you if the following changes are made:**

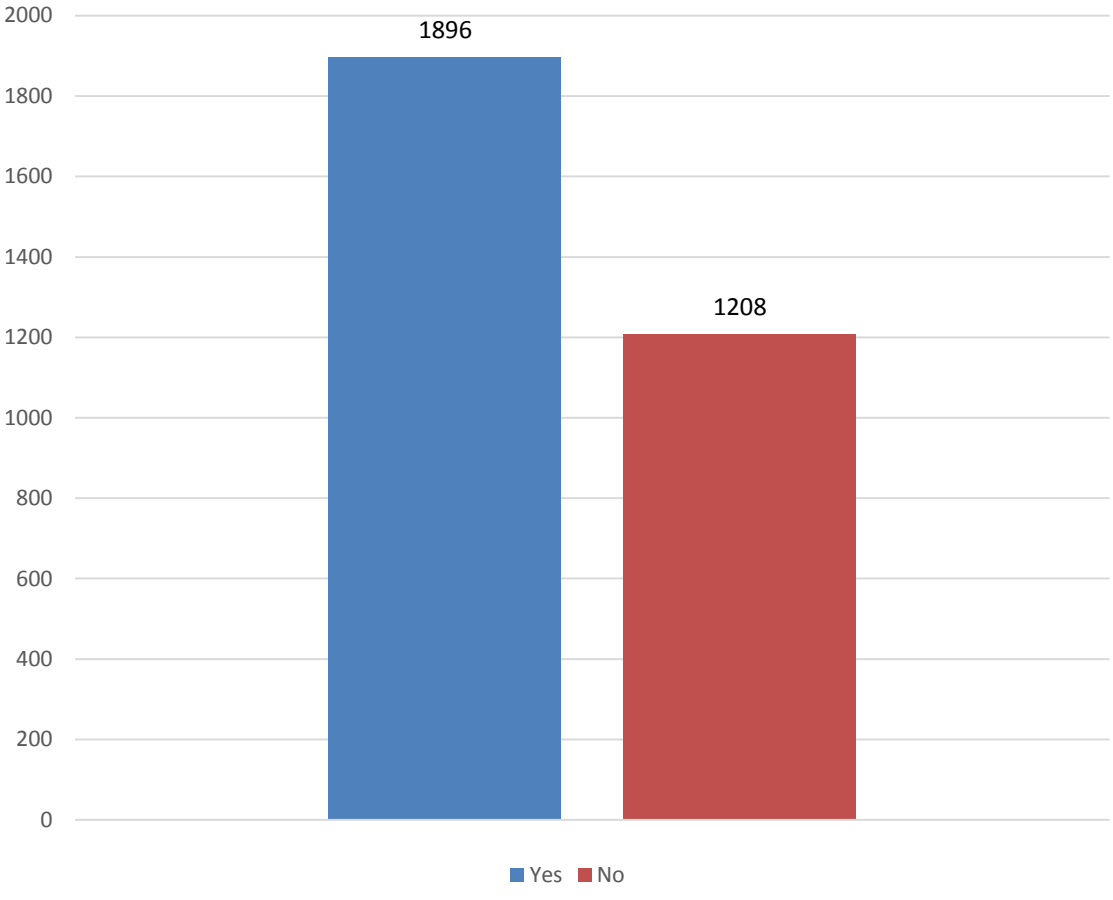


**B. Social Camps and O-week**

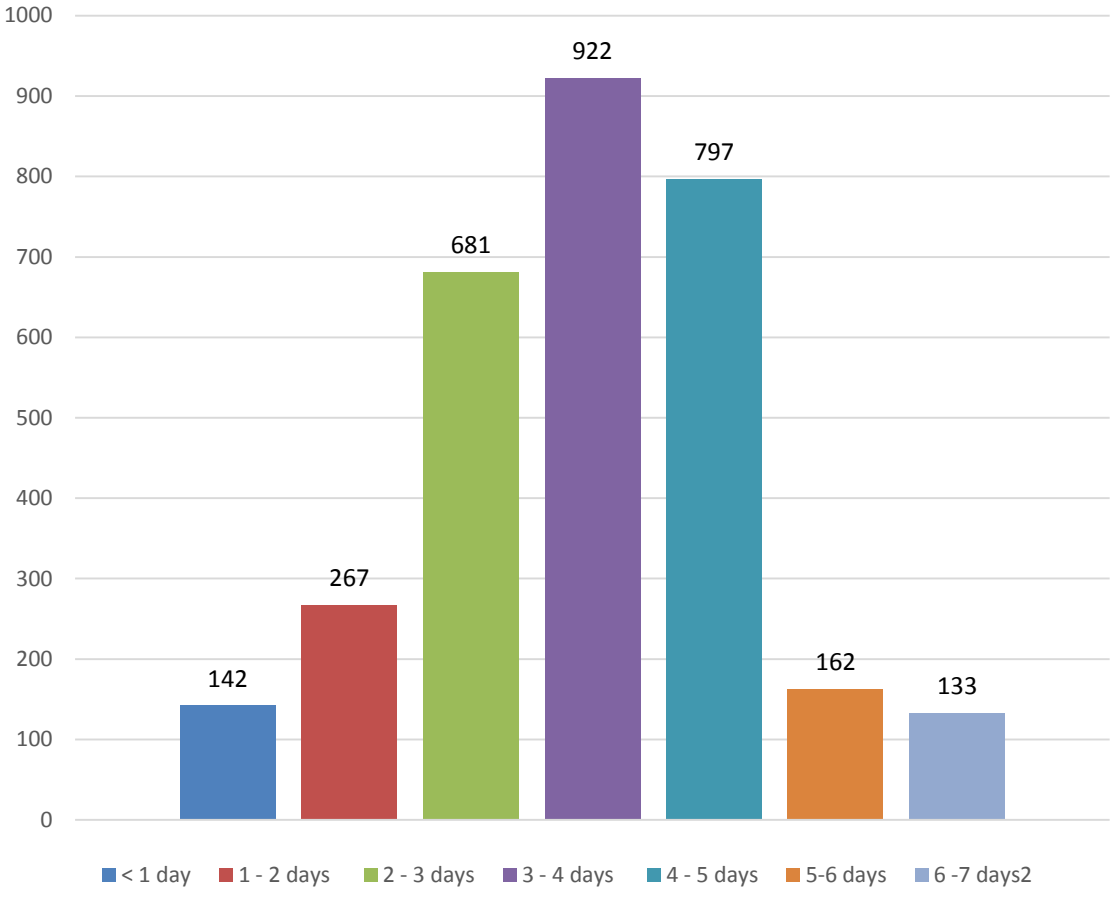
**8. Have you been for your faculty's social camp (e.g. Arts Camp/Engin Camp) or O week?**



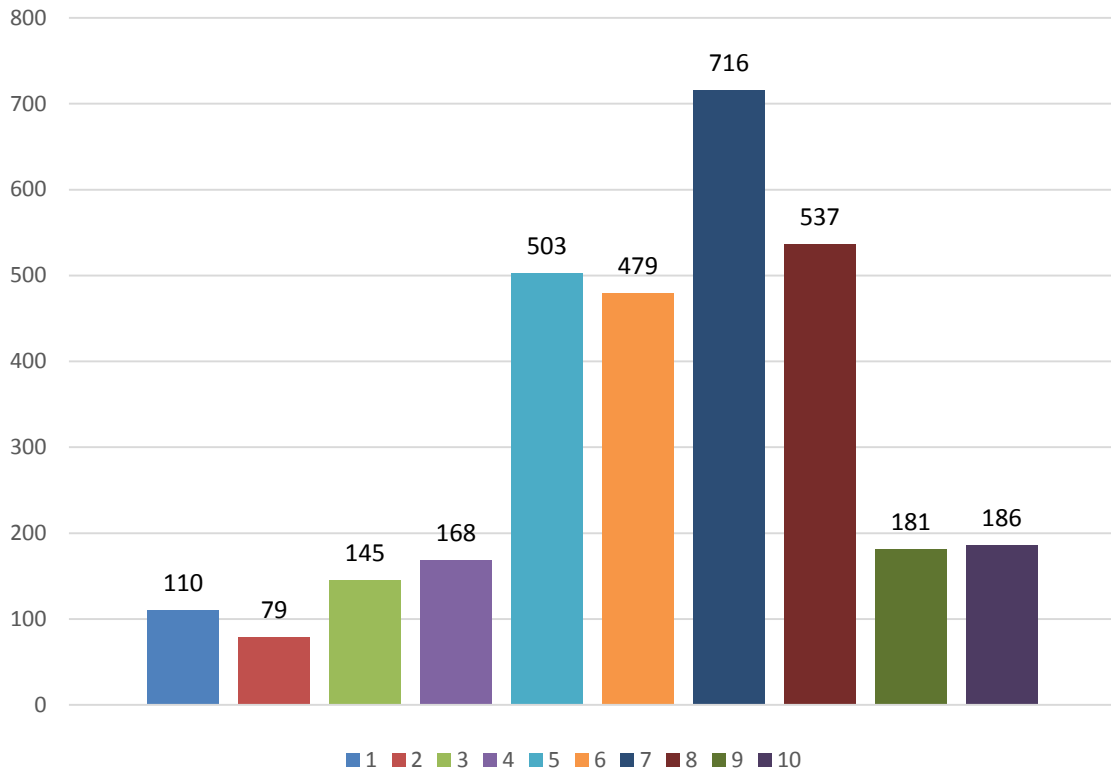
**9. Did you enjoy the activities held during the camp?**



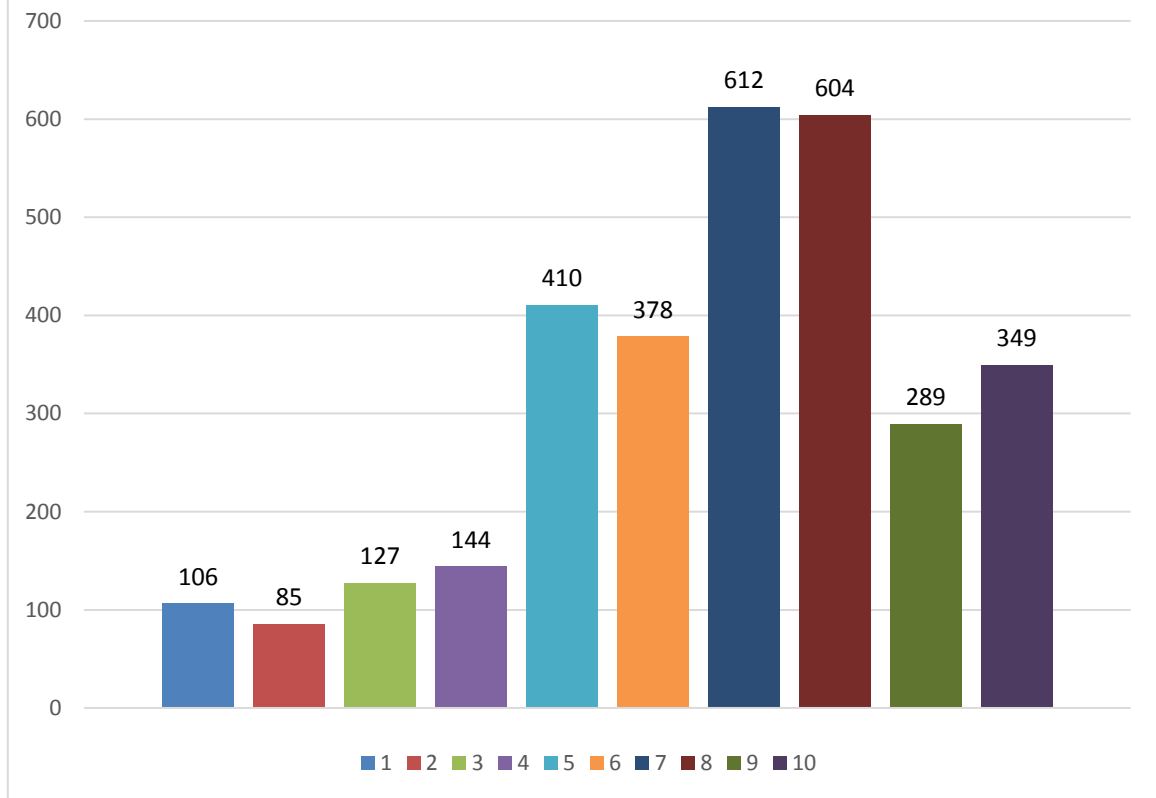
**10. What do you think is the appropriate length for faculty social camps?**



**11a. On a scale of 1 to 10 how effective are orientation camps in helping students feel a sense of belonging towards his/her faculty?**



**11b. On a scale of 1 to 10 how important are orientation camps to a student's university experience?**



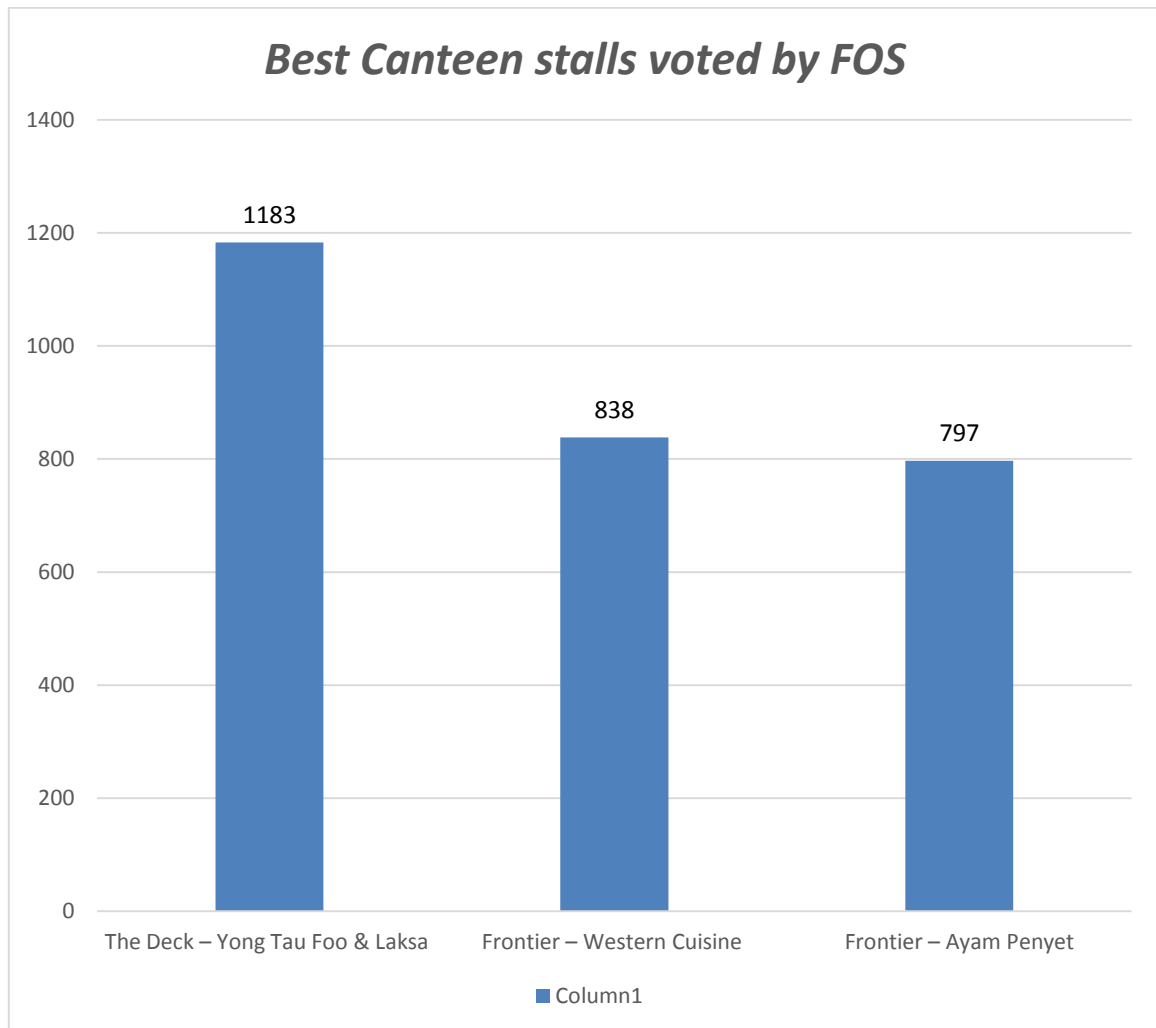
### C. NUS Food Contest

Best Canteen stall

1<sup>st</sup> : The Deck – Yong Tau Foo & Laksa with 1183 votes

2<sup>nd</sup>: Frontier – Western Cuisine with 838 votes

3<sup>rd</sup>: Ayam Penyet with 797 votes



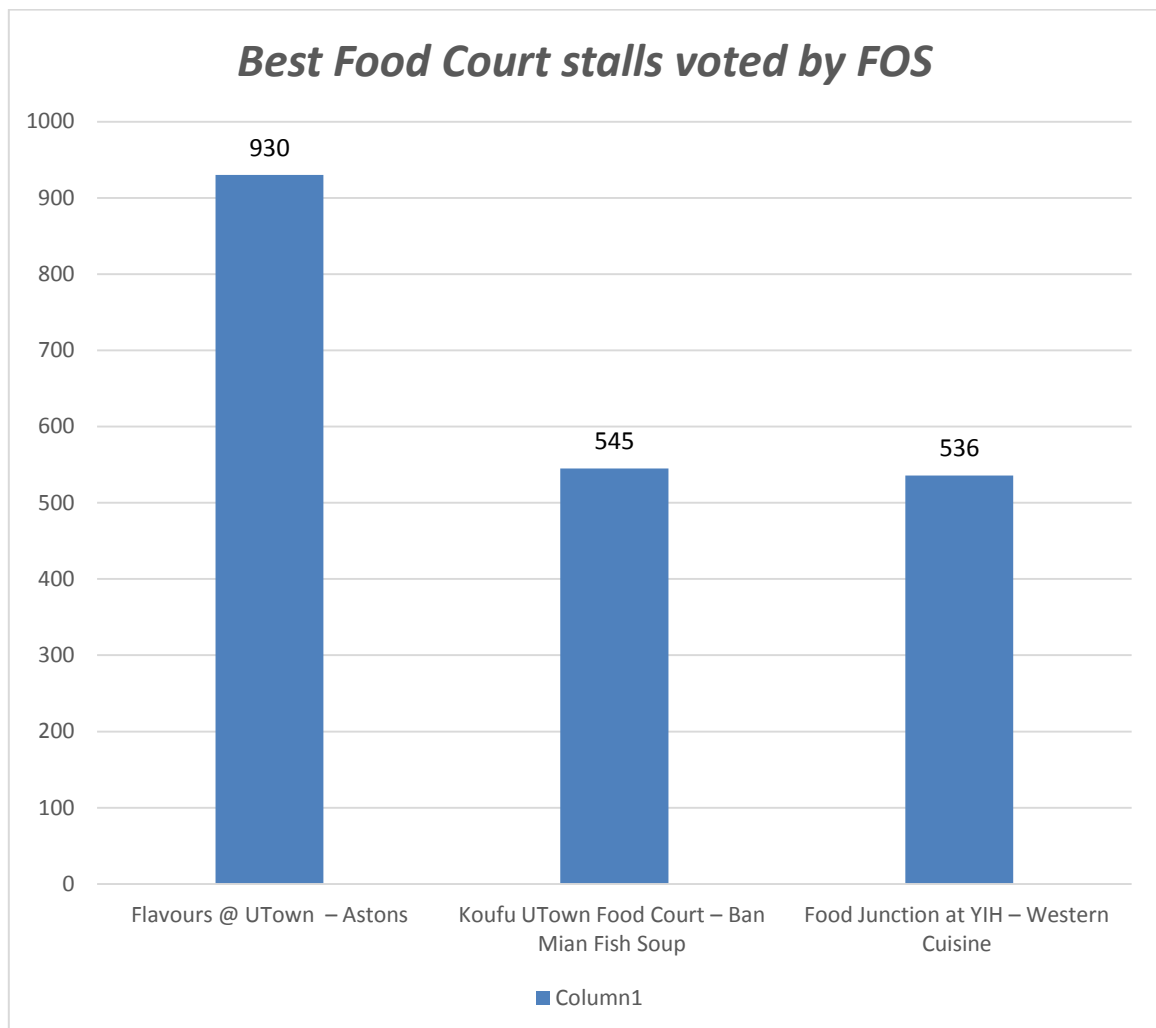


## Best Food Court stall

1<sup>st</sup> : Flavours @ UTown – Astons with 930 votes

2<sup>nd</sup>: Koufu UTown Food Court – Ban Mian Fish Soup with 545 votes

3<sup>rd</sup>: Food Junction at YIH – Western Cuisine with 536 votes

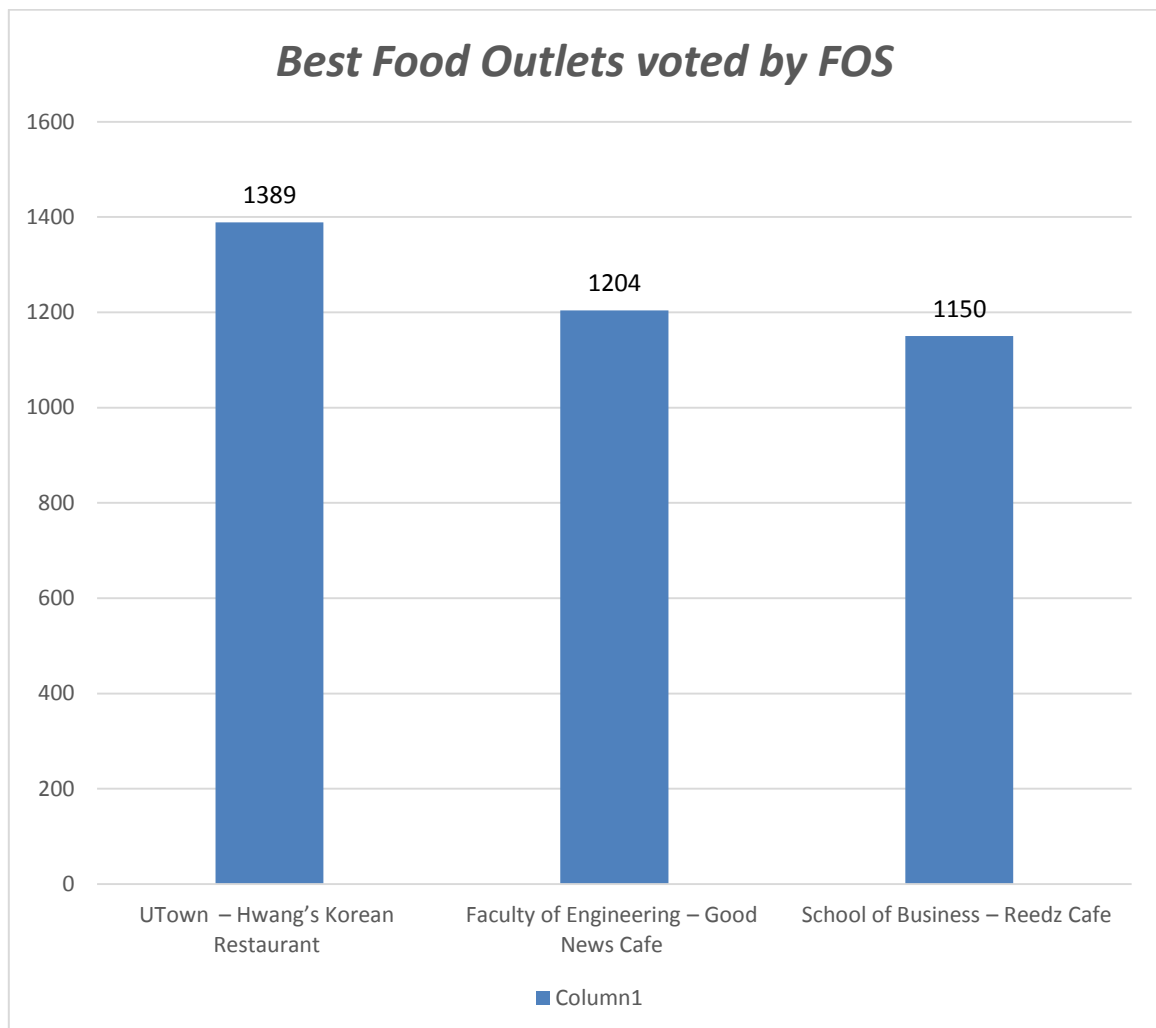


## Best Food Outlet

1<sup>st</sup> : UTown – Hwang’s Korean Restaurant with 1389 votes

2<sup>nd</sup>: Faculty of Engineering – Good News Cafe with 1204 votes

3<sup>rd</sup>: School of Business – Reedz Cafe with 1150 votes



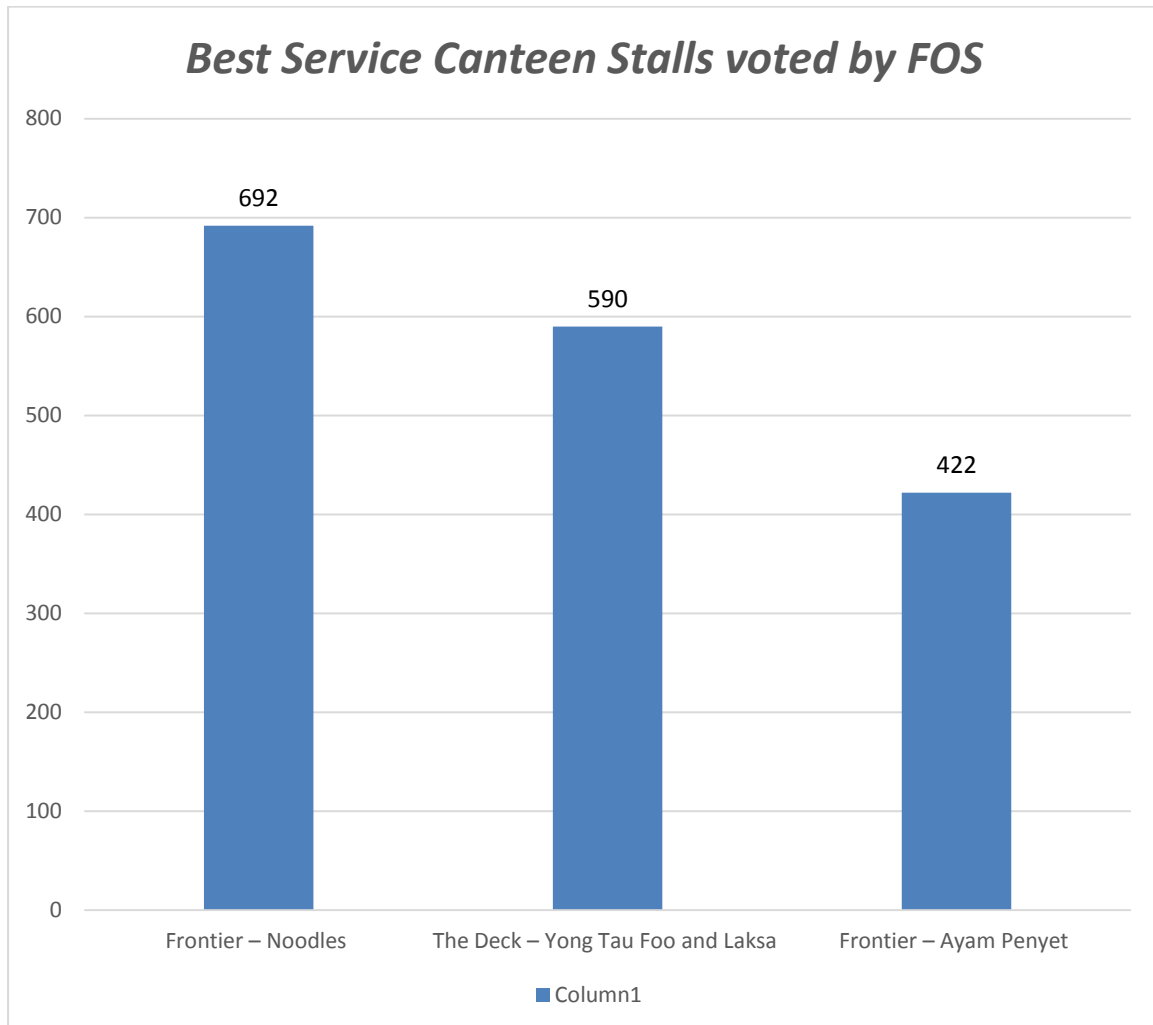
## C1: Service Star Award

Canteen stalls with the Best Service

1<sup>st</sup> : Frontier – Noodles with 692 votes

2<sup>nd</sup>: The Deck – Yong Tau Foo and Laksa with 590 votes

3<sup>rd</sup>: Frontier – Ayam Penyet with 422 votes

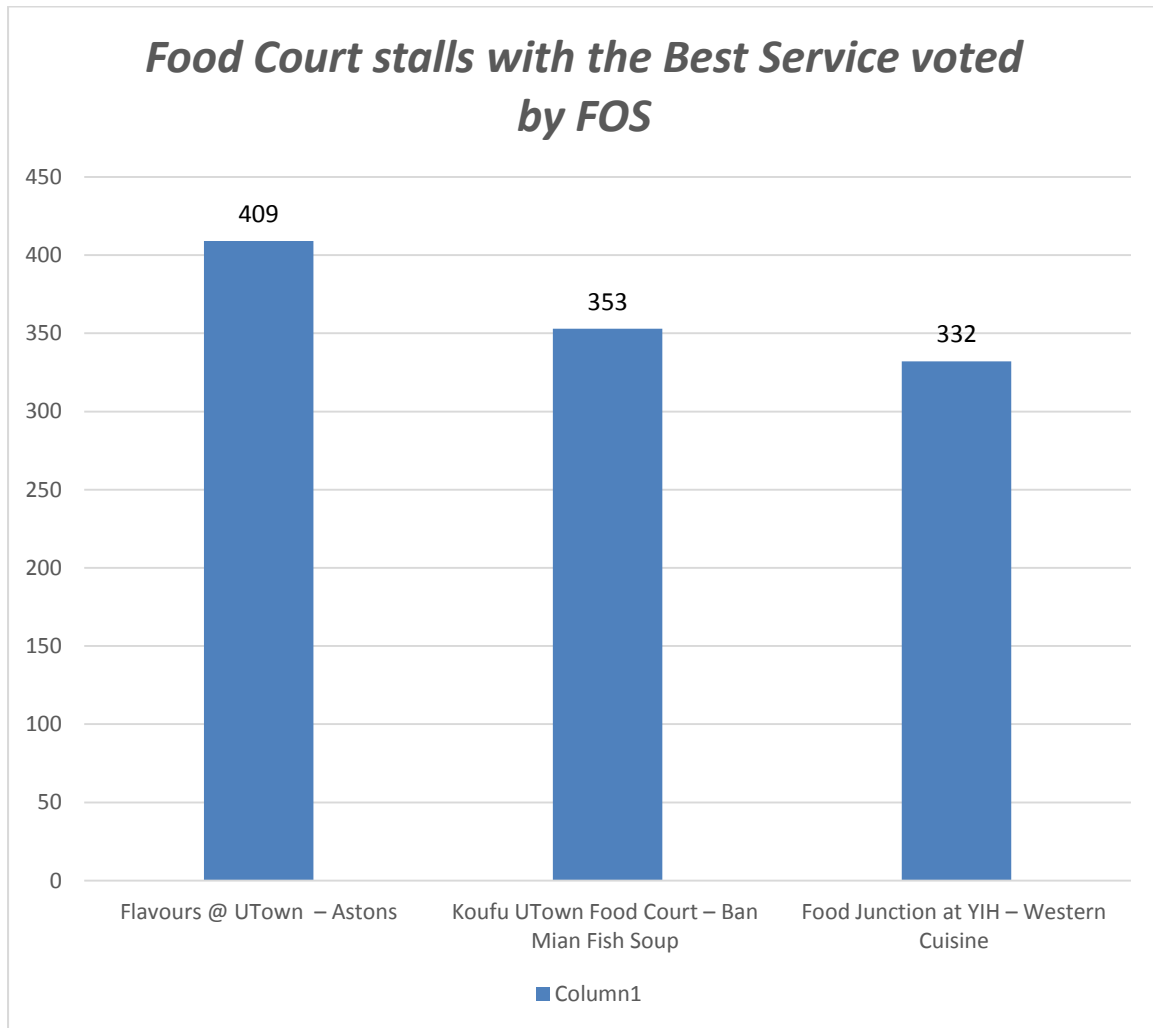


## Food Court stalls with the Best Service

1<sup>st</sup> : Flavours @ UTown – Astons with 409 votes

2<sup>nd</sup> : Koufu UTown Food Court – Ban Mian Fish Soup with 353 votes

3<sup>rd</sup> : Food Junction at YIH – Western Cuisine with 332 votes

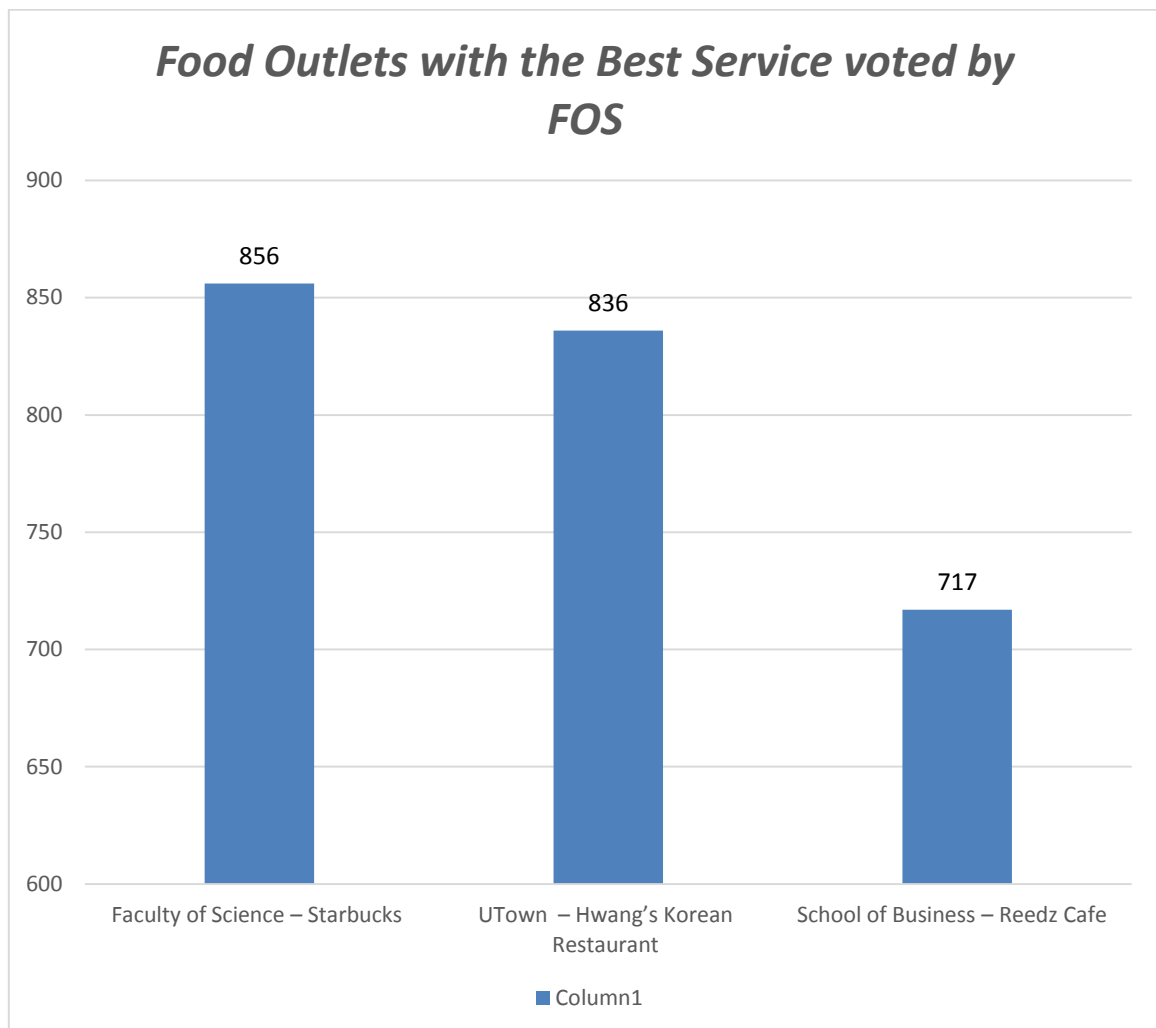


## Food Outlet with the Best service

1<sup>st</sup> : Faculty of Science – Starbucks with 856 votes

2<sup>nd</sup>: UTown – Hwang’s Korean Restaurant with 836 votes

3<sup>rd</sup>: School of Business – Reedz Cafe with 717 votes



### C1: Healthiest Meal category

Canteen stalls with the Healthiest meal

1<sup>st</sup> : The Deck – Yong Tau Foo and Laksa with 875 votes

2<sup>nd</sup>: Flavours @ UTown Food Court – Mixed Vegetable rice with 520 votes

3<sup>rd</sup>: Terrace – Chinese cooked food with 362 votes

